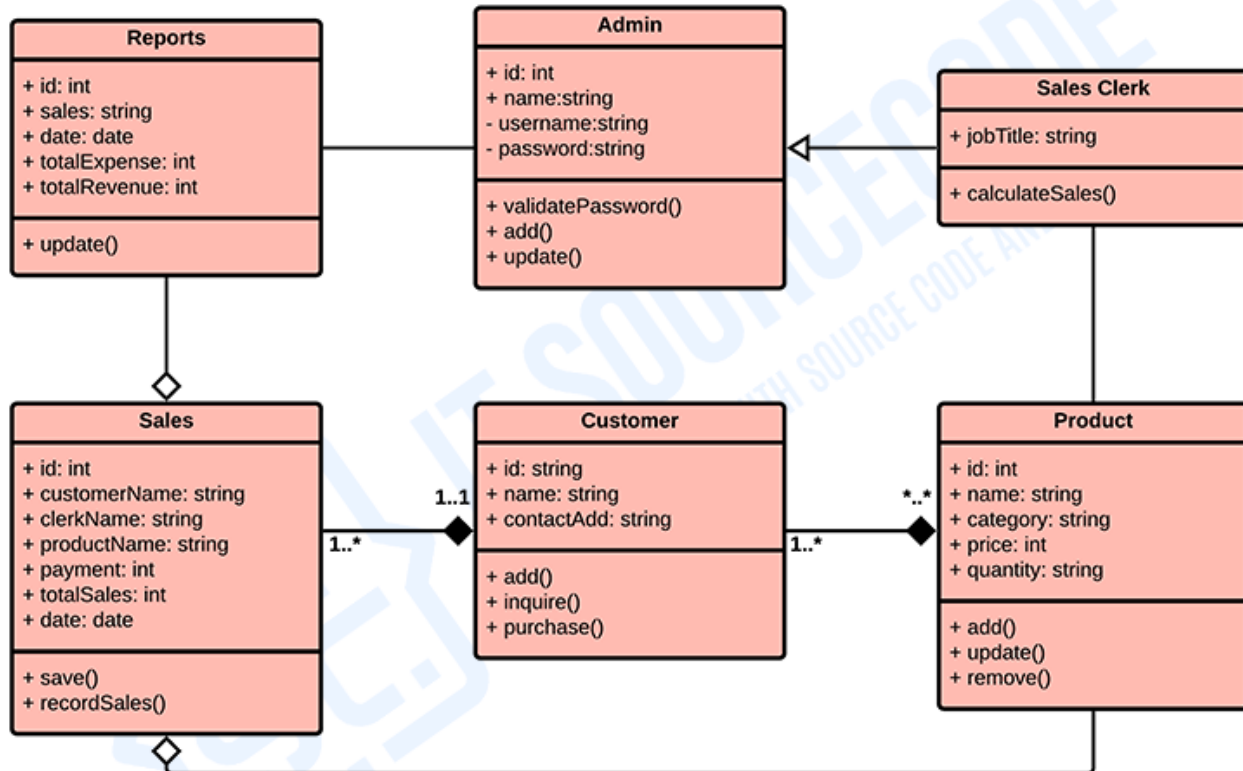


Point of Sale System Class Diagram

This simple class diagram gives you the exact details about the system's class characteristics and methods. It also clarifies the connections of classes in the system.

Here, I will be showing you the sample constructed class diagram provided with its attributes and methods. This is from the simple idea of the POS's common function.



Point of Sale (POS) System Class Diagram

The illustration shows a simple idea of how the class diagram works. It resembles a flowchart in which classes are present in boxes with three rectangles in each. The top rectangle has the class's name; the middle holds the class's properties, and the bottom contains the class's methods.

The classes identified for POS System were the **admin**, **reports**, **sales clerk**, **sales**, **customer**, and **product**. Their roles are in the middle part and called their attributes. The function of each class is in its' methods.

You can edit this diagram and it is up to you how will you create your class diagram. However, you need to be precise with your information and consider the decisions included.