

University Management System Class Diagram

The **university management system class diagram** is an illustration of the Unified Modeling Language's (UML) class relationships and source code dependencies. Its class describes the methods and variables of an object, which is a specific thing in a program or a piece of code that represents that object.

A University management system (UMS) is a software solution for universities and schools. It was created for the University and its affiliated institutions to conduct, monitor, and analyze complicated activities such as Automated Admission, Coordinated Examination, and much more.

The software is proposed to assist the university in managing student admissions data, reducing paper usage and personnel to do the job. Therefore, these features/functions must be put into consideration in constructing the University Management System class diagram.

UML Class Diagram for University Management System

The UML class diagram is similar to a flowchart in which classes are represented by boxes with three rows inside. The top rectangle holds the class's name; the middle rectangle contains the class's properties, and the bottom row contains the class's operation (methods).

The class diagram is one of the most useful forms of UML diagrams because it elaborates the system's structure by representing its classes, characteristics, processes, and object relationships.

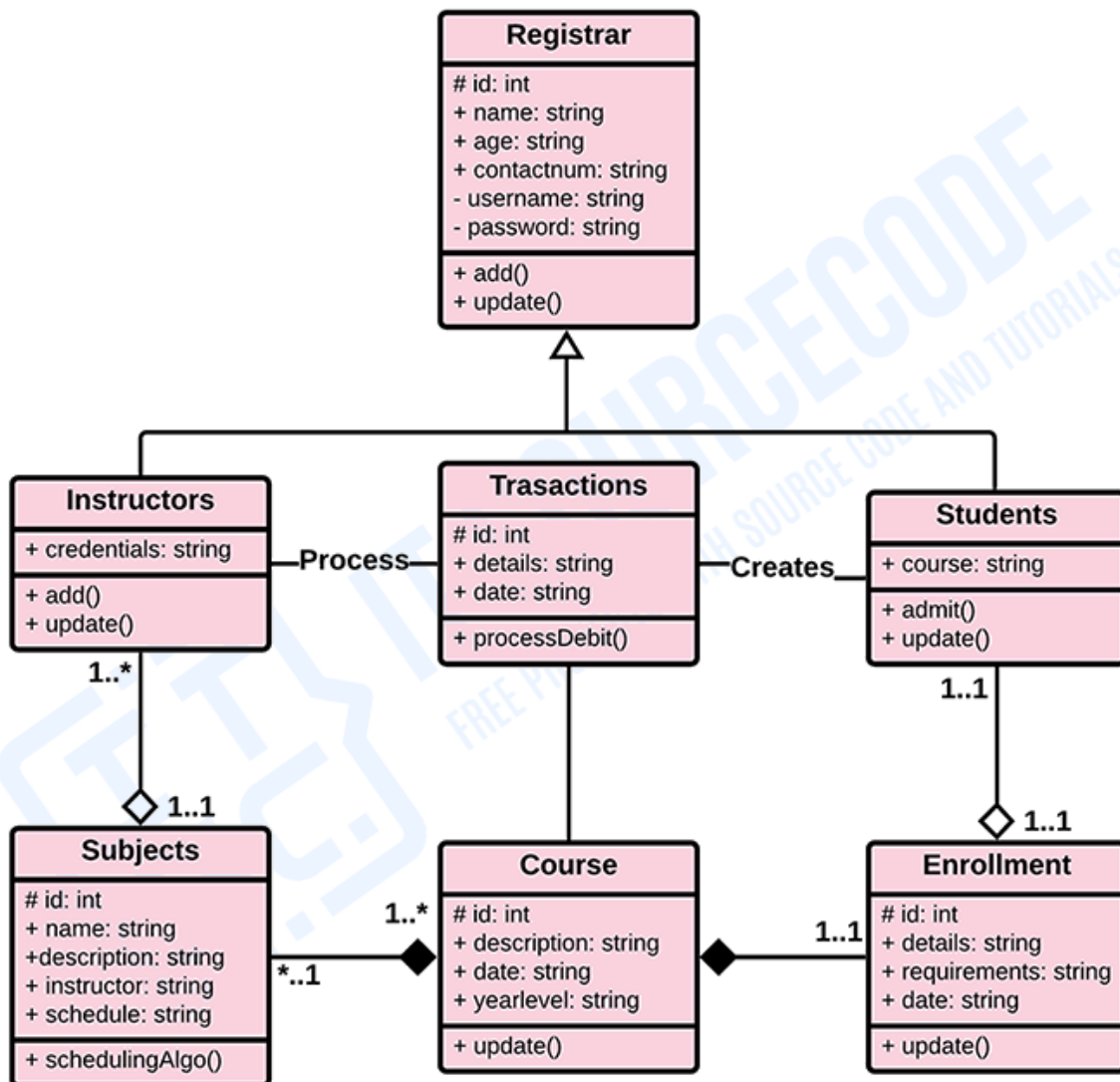
Benefits of a Class Diagram:

- Create data models for all types of information systems, no matter how simple or complex they are.
- Improve your comprehension of the overall schematics of an application.
- Visualize every system's unique requirements and disseminate that information throughout the organization.
- Make detailed diagrams that show any specific code that needs to be written and applied to the structure.
- Provide an implementation-agnostic description of the types used in a system that is then passed between its components.

Class Diagram for University Management System

The illustration shown in the UML Class Diagram has a simple idea of how the university management system works. It resembles a flowchart in which classes are represented as boxes with three rectangles inside each box. The top rectangle has the class's name; the middle rectangle contains the class's properties; and the bottom rectangle contains the class's methods, commonly known as operations.

UNIVERSITY MANAGEMENT SYSTEM



CLASS DIAGRAM

Class Diagram for University Management System in UML

UML Class Diagram for University Management System (Explanation)

As you can see through the illustration, the classes were determined which is symbolized by boxes. They were designated with their corresponding attributes and shows the class' methods. Their relationships are also plotted to show the connections between classes and their multiplicity.

You should also look into the visibility symbols displayed in the diagram. These are important because it declares the status of attributes in your Class Diagram. Some of the Class' attributes are for public (+) which means that they can be accessed by the classes connected to them. While the protected (#) symbols, means that the attributes of the data can be accessed by the same classes or subclass and the (-) symbol means it cannot be accessed by other class.

Just bear in mind that when you create your class diagram, you have to be specific. This will affect your project development. Do not worry because you can use the sample given as your project reference or you may also create your own.