

Student Enrollment System Activity Diagram

The **Student Enrollment System Activity Diagram** is a UML behavioral modeling. It shows the system's behavior by presenting the flow of activities from one to another. The possible flow of activities can be in order, split, or continuous. The activity diagram for the enrollment system uses symbols to define the overall workflow of the activity diagram. It is composed of activities, decisions, and paths (flows).

The activity diagram visually depicts a set of actions or control flows in a student enrollment system. People, software components, and computers can all do these tasks. It describes the processes in a use case diagram and is commonly used in business process modeling. Modeled activities can either be sequential or concurrent. Its' illustration can be used to illustrate the process of implementing a student enrollment system.

Importance of Student Enrollment System Activity Diagram

The **importance of the student enrollment system activity diagram** is that it enables interaction between developers and clients. This is done by helping them visualize the system's functionality in various degrees of detail.

The activity diagram involves major activities to define the workflow of the project. These activities come with user decisions that result in more effective interaction. Being a programmer, these are the important roles that the **student enrollment system** should have.

UML Activity Diagram for Student Enrollment System

The **UML Activity Diagram for Student Enrollment System** is one of the methods used for project development. It represents the system's major activities and constraints that lead to paths that the project includes. They were labeled properly to guide programmers and users about the behavior of the Student Enrollment System.

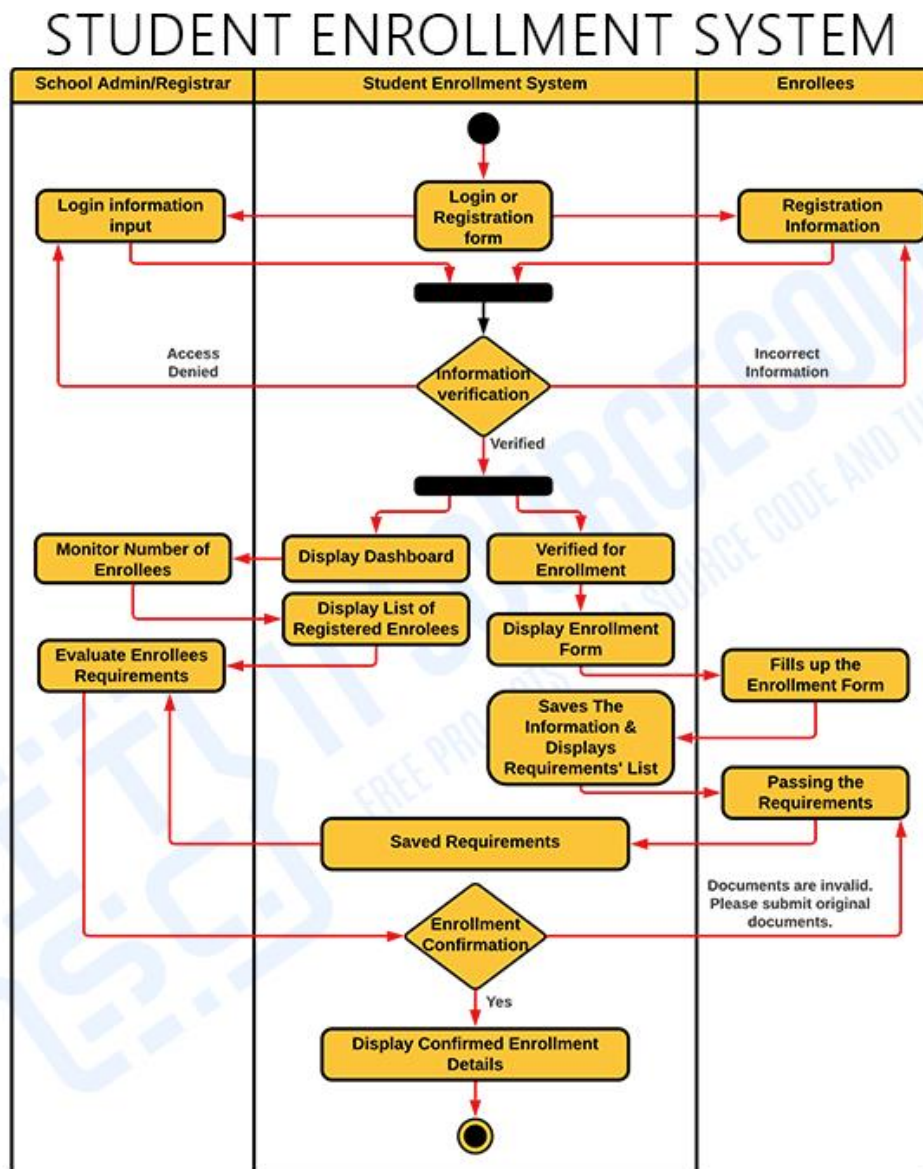
Additionally, the activity diagram depicts software operations as a series of actions. These diagrams are used to document and define the system processes and use cases. It can clarify difficult use cases to simplify and improve any process. An activity diagram also models the system's actions, functions, and processes.

The enrollment system activity diagrams provide the same basic goals as the other [UML diagrams](#). It illustrates the system's dynamic behavior. The flow of messages from one object to another is shown in other UML diagrams. The activity diagram, on the other hand, shows the flow of messages from one activity to another.

Activity Diagram for Student Enrollment System using Swim lanes

The **Activity Diagram** for the **Enrollment System using Swim lanes** is given to expound its ideas. This Activity Diagram using swim lanes is shown in different scenarios and is based on its users.

Activity Diagram for Student Enrollment System - This illustration shows the activities and scenarios done when using a student enrollment system. The actions and decisions included were all emphasized here.



ACTIVITY DIAGRAM
Activity Diagram for Student Enrollment System in UML

You can add more to this and it is up to you how will you create your activity diagram. Only be precise with your information and consider the decisions that should be included.

Student Enrollment System Activity Diagram: Benefits

The **Activity Diagram Benefits** are as follows:

- An Activity Diagram helps in understanding how an algorithm works.
- It describes the steps that a UML use case takes.
- Shows how users and the system interact in a process or workflow.
- Clarify difficult use cases to simplify and improve any process.