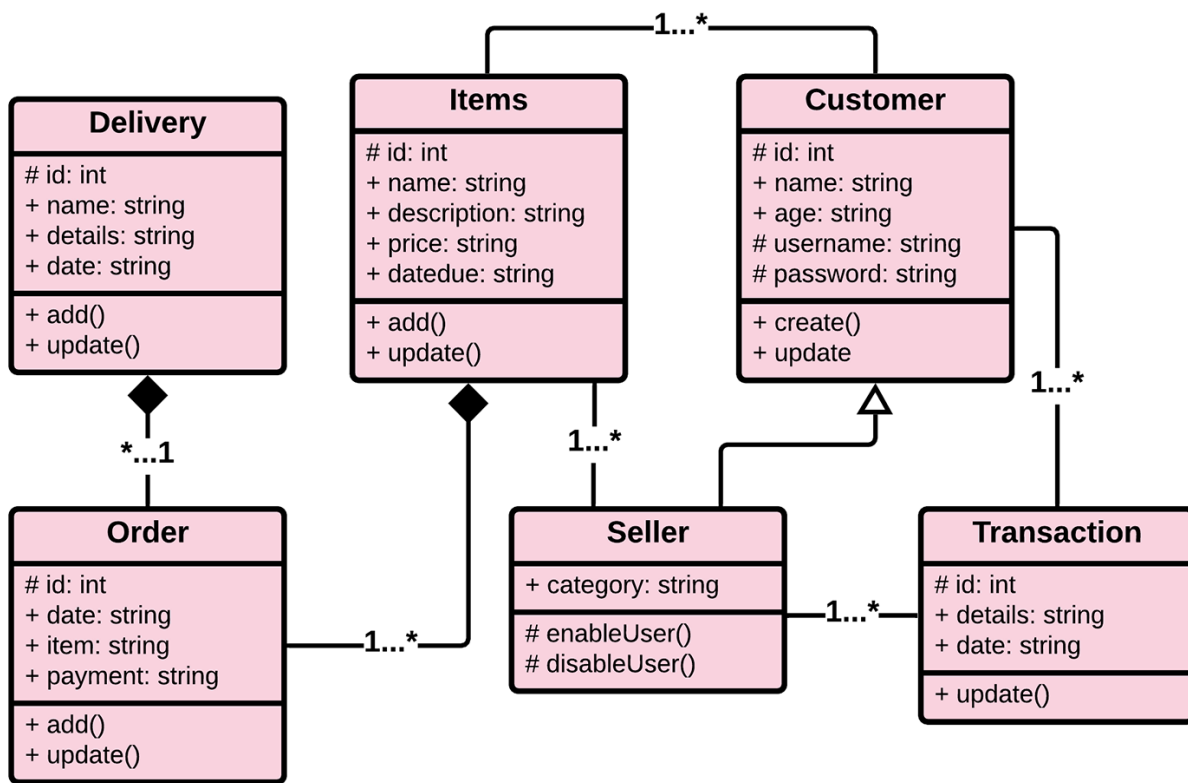


Online Shopping System Complete UML Diagrams

Here are the **complete UML Diagrams for Online Shopping System**. Each of the UML Diagrams has a major role in achieving a well-developed and functioning Online shopping System.

Online Shopping System Class Diagram

The [Online Shopping System Class Diagram](#) is a designed diagram that shows the system's relationships and classes. It contains the class attributes, methods as well as the relationships between classes. These mentioned contents make sure that your Online Shopping system development must in line with what should be its functions.

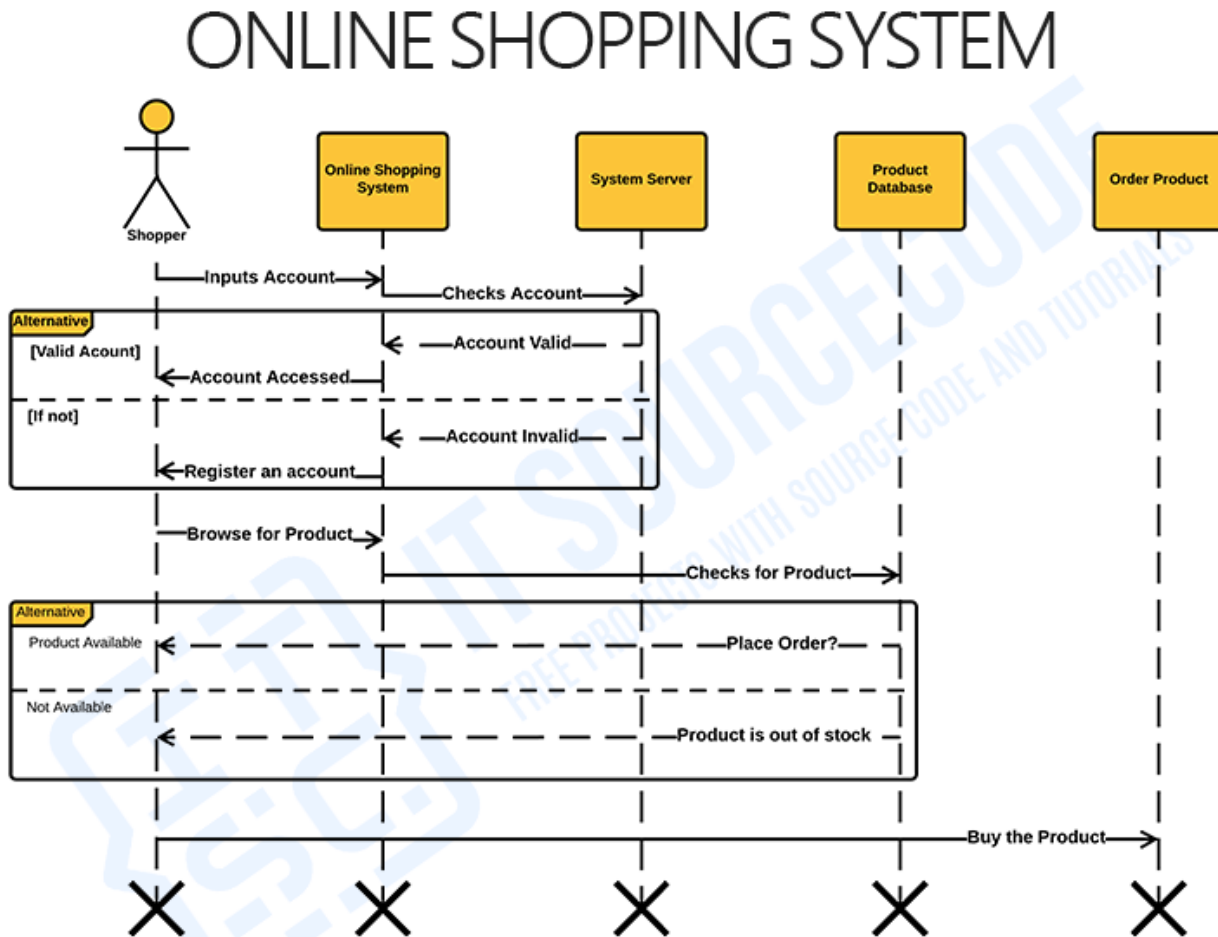


Online Shopping System Class Diagram

So, the classes that must be made in an Online Shopping are the **users, sellers, items or products, order information, deliveries, and transaction**. The mentioned classes were just general. If you want a more complex or wider scope of your Online Shopping system, then you can add your desired classes. You must also include the database on your Class Diagram for your system.

Online Shopping System Sequence Diagram

This [Online Shopping System UML Sequence Diagram](#) shows a detailed illustration of the sequence of events happening in the Online Shopping System. This designed sequence diagram is able to show programmers and readers the sequence of messages between the actor and the objects.



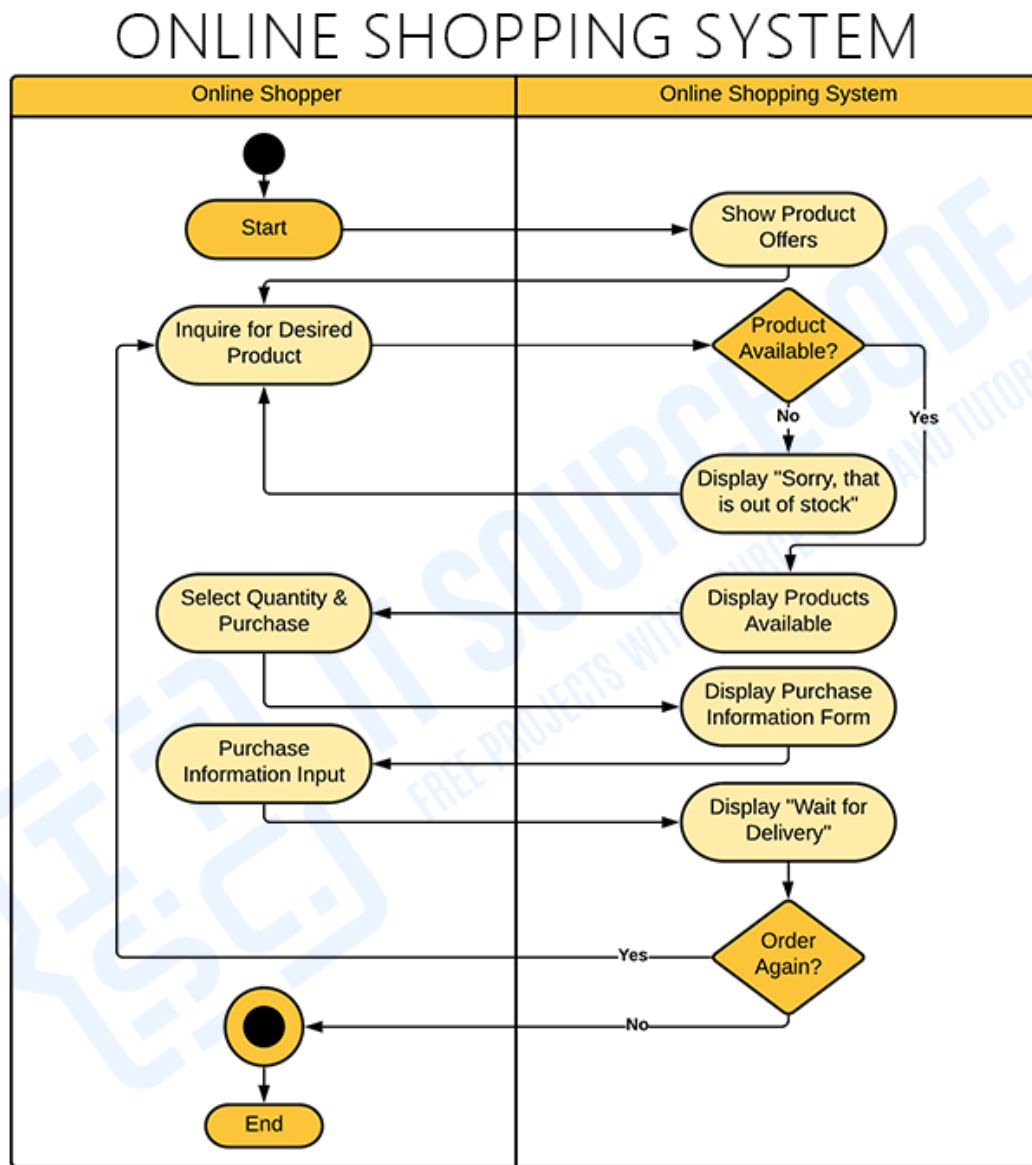
SEQUENCE DIAGRAM

Online shopping System Sequence Diagram

As you can see through the illustration, the conditions and interactions are emphasized. These interactions are essential for the Online Shopping System development.

Online Shopping System Activity Diagram

The [Online Shopping System Activity Diagram](#) will give you the scenarios of exchanging activities between then the users and the system. The activity diagram has symbols just like swim lanes, actors and arrows which will help you understand the workflow of the online shopping management system.



ACTIVITY DIAGRAM

Online Shopping System Activity Diagram

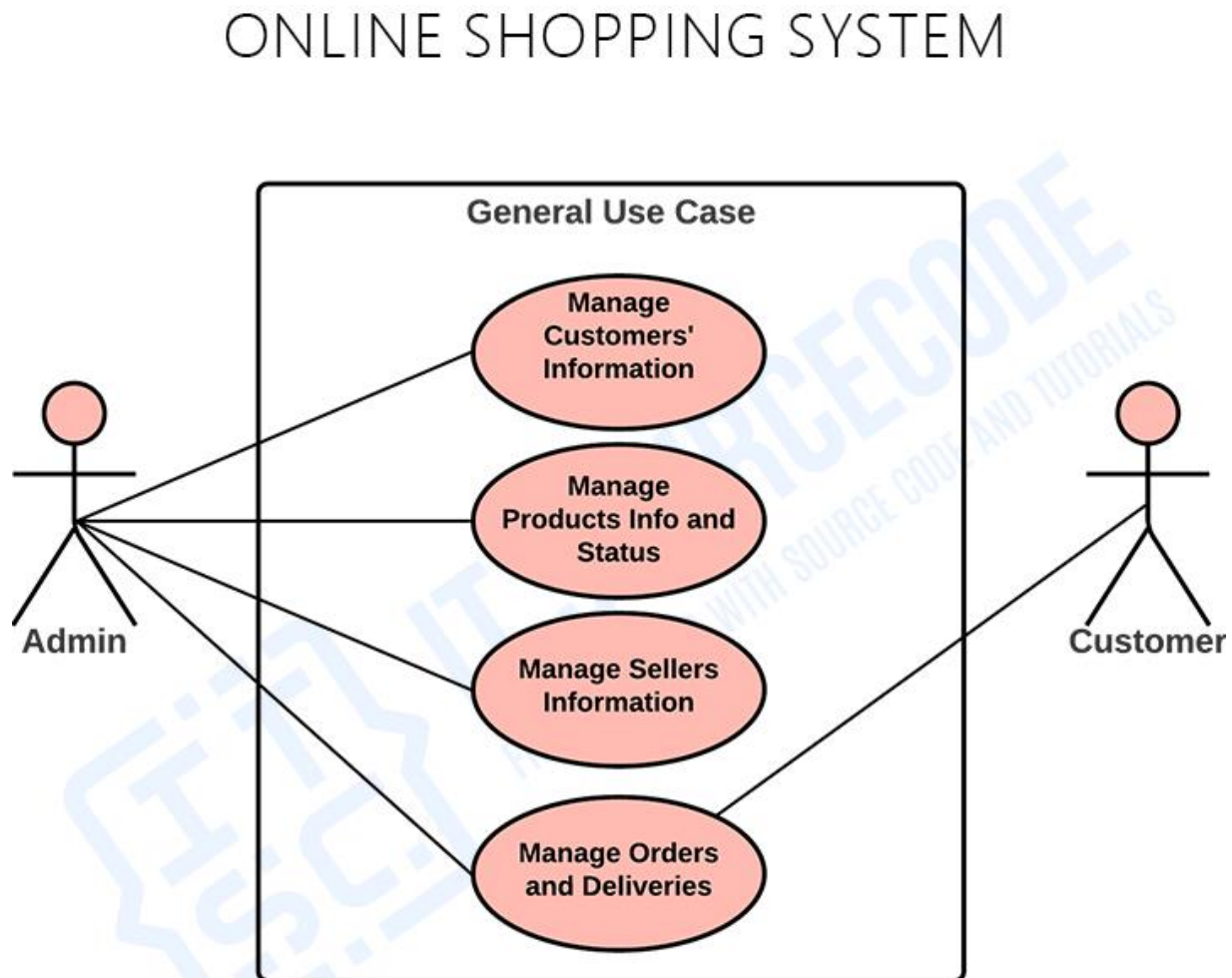
In this activity diagram illustration, you will see the interaction between the online shopper and the system with the flow of arrows in the online shopping system using swim lanes. Then you

can see the activities done by the online shopper in the system. These activities are common in an online shopping management system which is why they are present in this activity diagram.

Online Shopping System Use Case Diagram

This [Online Examination System Use Case Diagram](#) shows the processes included in Online Examination System as well as its users. It serves as a blueprint or core of the said system that will be the basis for building it. And to emphasize the connection of every process, it has arrows labeled with include and Extends.

Online Shopping System General Use Case – This diagram shows the general processes or functions that the system could do that are based on the activities done by the shopping admin, customers, and sellers in the system.

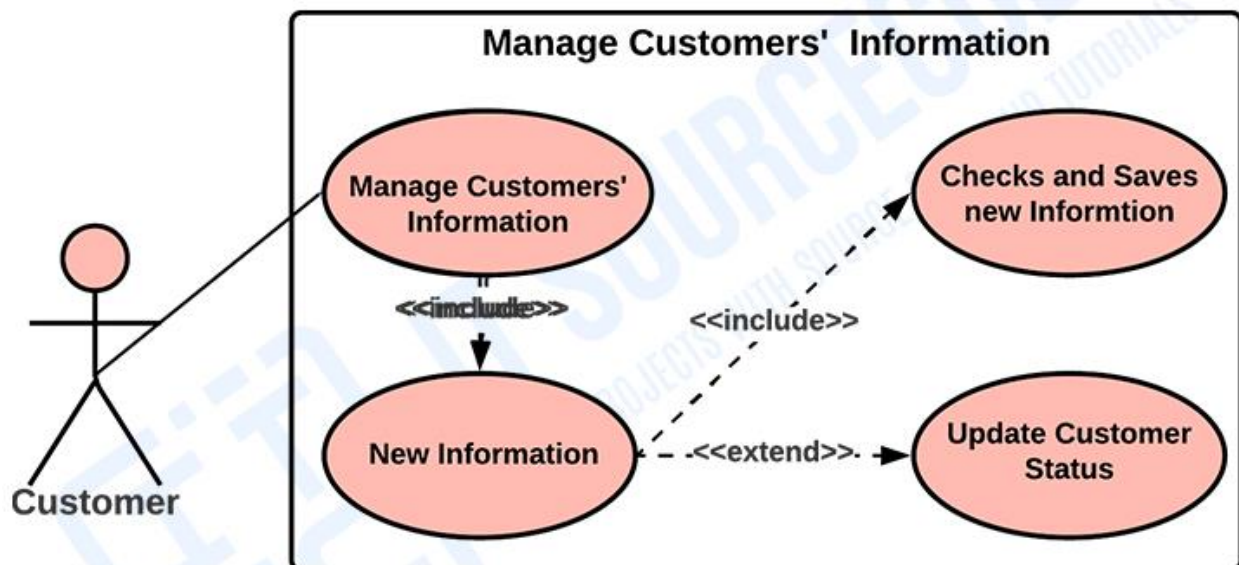


USE CASE DIAGRAM

Online Shopping System General Use Case Diagram

Use Case Diagram for Online Shopping System using Include and Extend (**Manage Customers Information**) - This diagram focuses mainly on the use case “Manage User’s Information”. It includes the sub-processes which are pre-requisite to complete user information management.

ONLINE SHOPPING SYSTEM

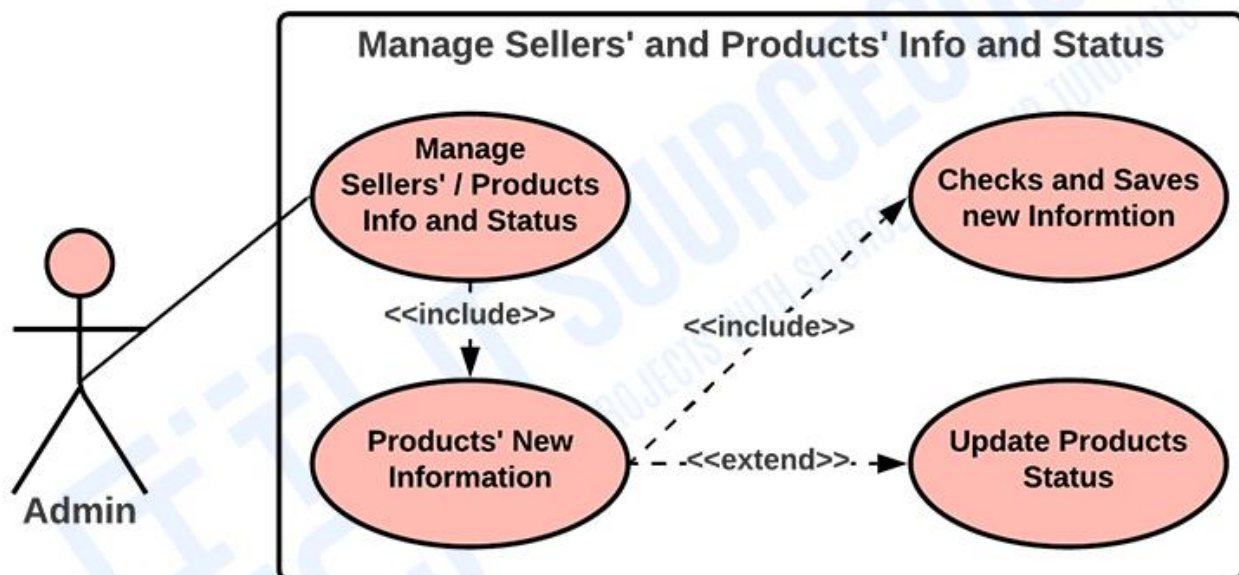


USE CASE DIAGRAM

Manage Customer's Information Use Case Diagram

Manage Products Info and Status Use Case Diagram – This is the process where the admin will monitor the products for a certain category to display them as offers to the customers. The monitoring consist of encoding the products from the sellers updates the products' status and the count of its orders and deliveries to the customers.

ONLINE SHOPPING SYSTEM

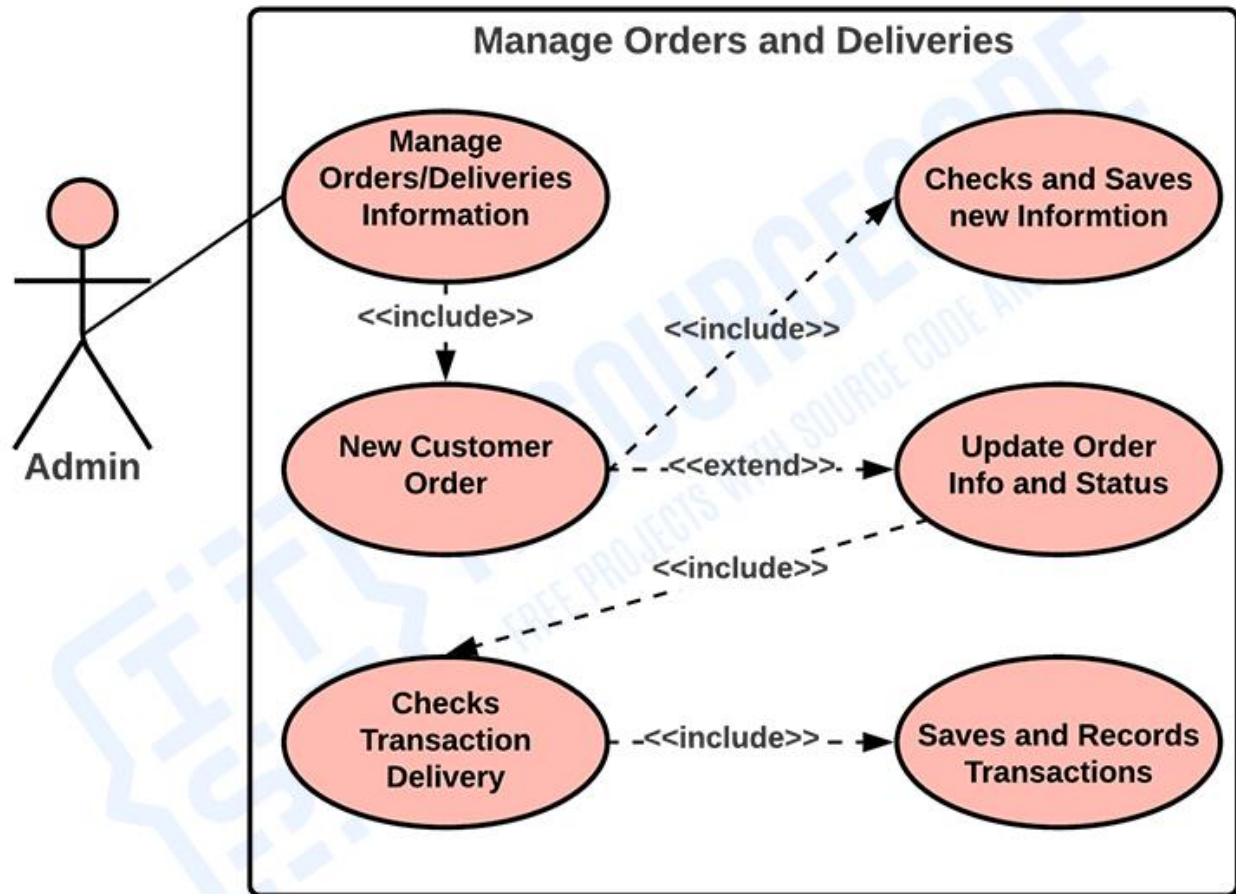


USE CASE DIAGRAM

Manage Products Info and Status Use Case Diagram

Manage Orders and Deliveries Use Case Diagram – This process explains that the information from the customer's request and orders up to deliveries were processed. This information was composed of the date of reservation or order, the number of products or items purchased, prizes for each item and total payment, and the date of delivery.

ONLINE SHOPPING SYSTEM



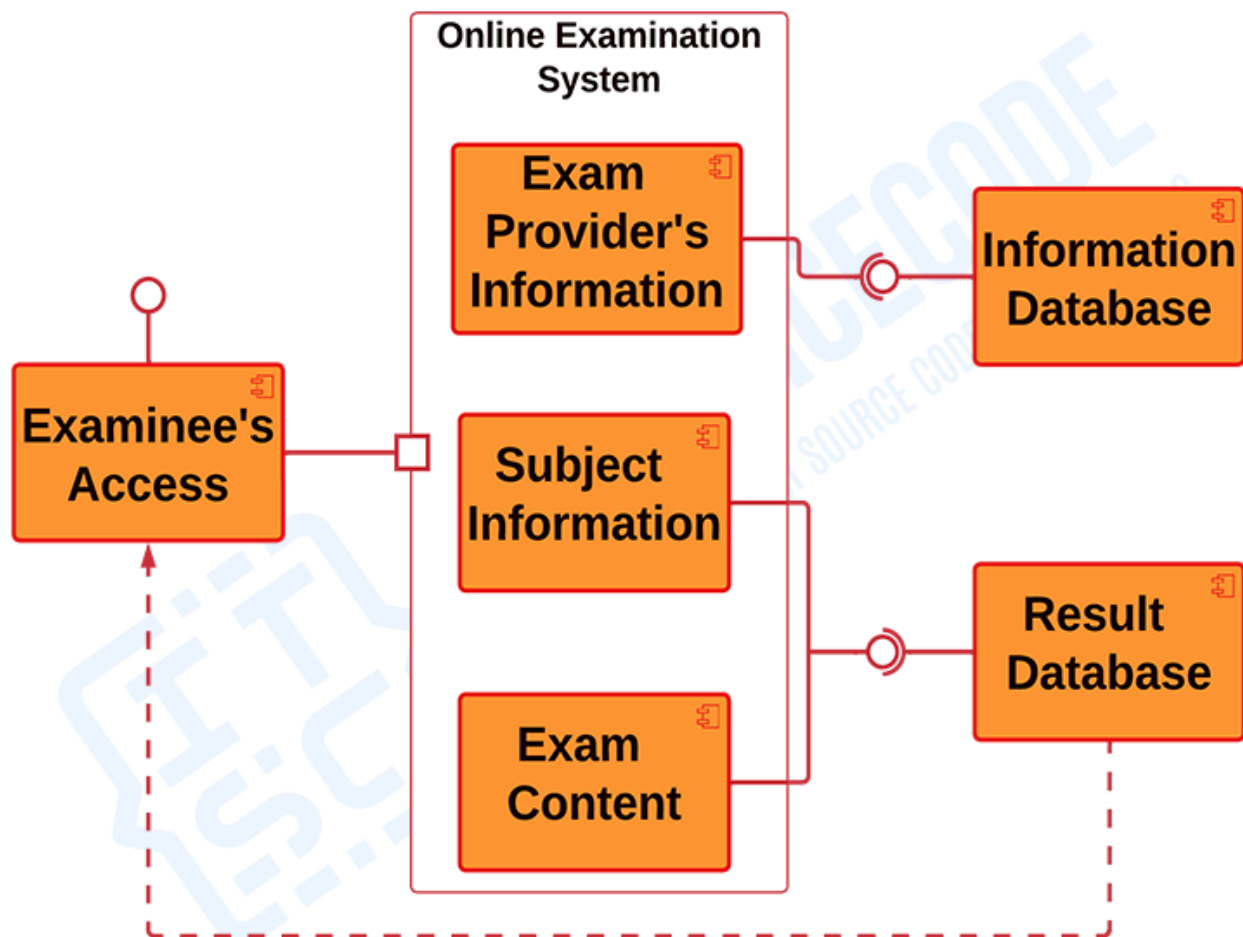
USE CASE DIAGRAM

Manage Orders and Deliveries Use Case Diagram

Online Shopping System Component Diagram

This [Component Diagram for Online Examination System](#) shows the structure of the examination system, which consists of the software components and their interfaces, and how they work together. You can use component diagrams to show how software systems work at a high level, or you can use them to show how each component works at a lower level, like in a package.

ONLINE EXAMINATION SYSTEM



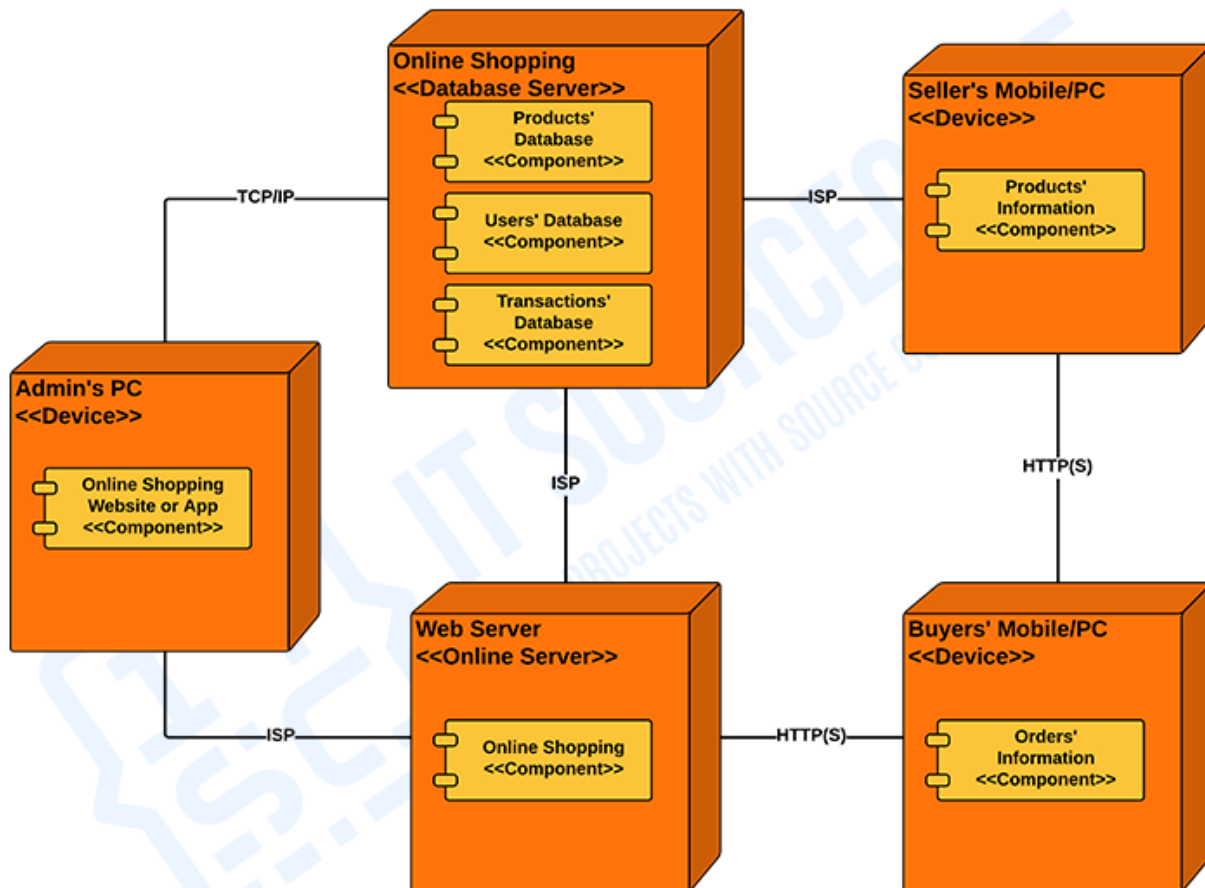
COMPONENT DIAGRAM

Online Shopping System Component Diagram

Online Shopping System Deployment Diagram

The [Deployment Diagram for Online Shopping System](#) is one of the UML models used to visualize the deployment of the Online Shopping System architecture. It contains elements such as hardware, software, and the middleware that connects them. UML **Deployment Diagram** presents the system's needs for hardware and software.

ONLINE SHOPPING SYSTEM



DEPLOYMENT DIAGRAM

Online Shopping System Deployment Diagram