

Credit Card Processing System Activity Diagram

The **credit card processing system activity diagram** is a UML behavioral model that shows the credit card process by presenting the flow of activities that happens when one applies to a bank for a credit card. This example activity diagram uses symbols to define the overall workflow of the credit card process. It is composed of activities, decisions, and paths (flows).

The activity diagram visually depicts a set of actions or control flows on credit card processing. People, software components, and computers can all do these tasks. It describes the processes in a use case diagram and is commonly used in business process modeling. Modeled activities can either be sequential or concurrent. Its' illustration can be used to illustrate the process of implementing the process.

Importance of Credit Card Processing System Activity Diagram

The **importance of credit card processing system activity diagram** is that it enables interaction between developers and clients. This is done by helping them visualize the system's functionality in various degrees of detail.

The activity diagram involves major activities to define the workflow of the project. These activities come with user decisions that result in more effective interaction. Being a programmer, these are the important roles that credit card processing should have.

Credit Card Processing System Activity Diagram in UML

The **Credit Card Processing System UML Activity Diagram** is one of the methods used for project development. It represents the system's major activities and constraints that lead to paths that the project includes. They were labeled properly to guide programmers and users about the behavior of the credit card processing system.

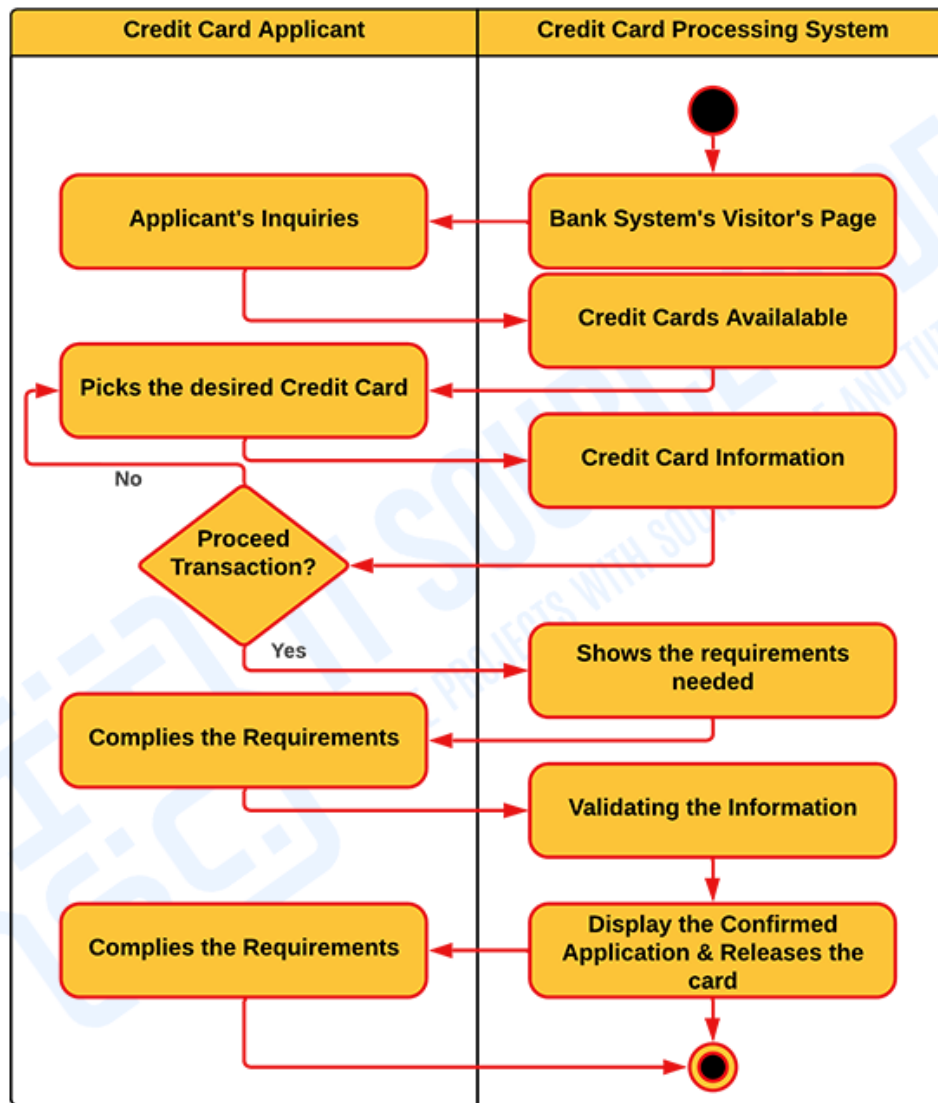
Additionally, the activity diagram depicts software operations as a series of actions. These diagrams are used to document and define the system processes and use cases. It can clarify difficult use cases to simplify and improve any process. An activity diagram also models the system's actions, functions, and processes.

The activity diagram for credit card processing system provides the same basic goals as the other [UML diagrams](#). It illustrates the system's dynamic behavior. The flow of messages from one object to another is shown in other UML diagrams. The activity diagram, on the other hand, shows the flow of messages from one activity to another.

Credit Card Processing System Activity Diagram

The **Credit Card Processing System Activity Diagram** is given to expound on its ideas. This activity diagram example using swim lanes is shown in the detailed illustration to enlighten the programmers in figuring out what the activities happen when a user logs in to a system. This example illustration shows the activities and scenarios done in a credit card processing. The actions and decisions included were all emphasized here.

CREDIT CARD PROCESSING SYSTEM



ACTIVITY DIAGRAM

Activity Diagram for Credit Card Processing System in UML

You can add more to this and it is up to you how will you create your activity diagram. Only be precise with your information and consider the decisions that should be included.