

# Attendance Management System Sequence Diagram

The **Sequence Diagram for Attendance Management System** describes the series of interactions that occur with the objects when performing the system's process. A sequence diagram is one of the UML models used for presenting the workflow, sequence of messages, and interactions within the Attendance Management System.

## What is an Attendance Management System?

Employee working hours, time off, break time, login time, departures, and attendance are all tracked by an attendance management system. The system not only keeps correct records of attendance and absences but also saves HR and office personnel time and money on attendance management tasks.

Employee identifications are used by the attendance system to verify who is clocking in and out of work each day. A device scans the employee's finger, face, or identification to check and record the presence or absence of the employee.

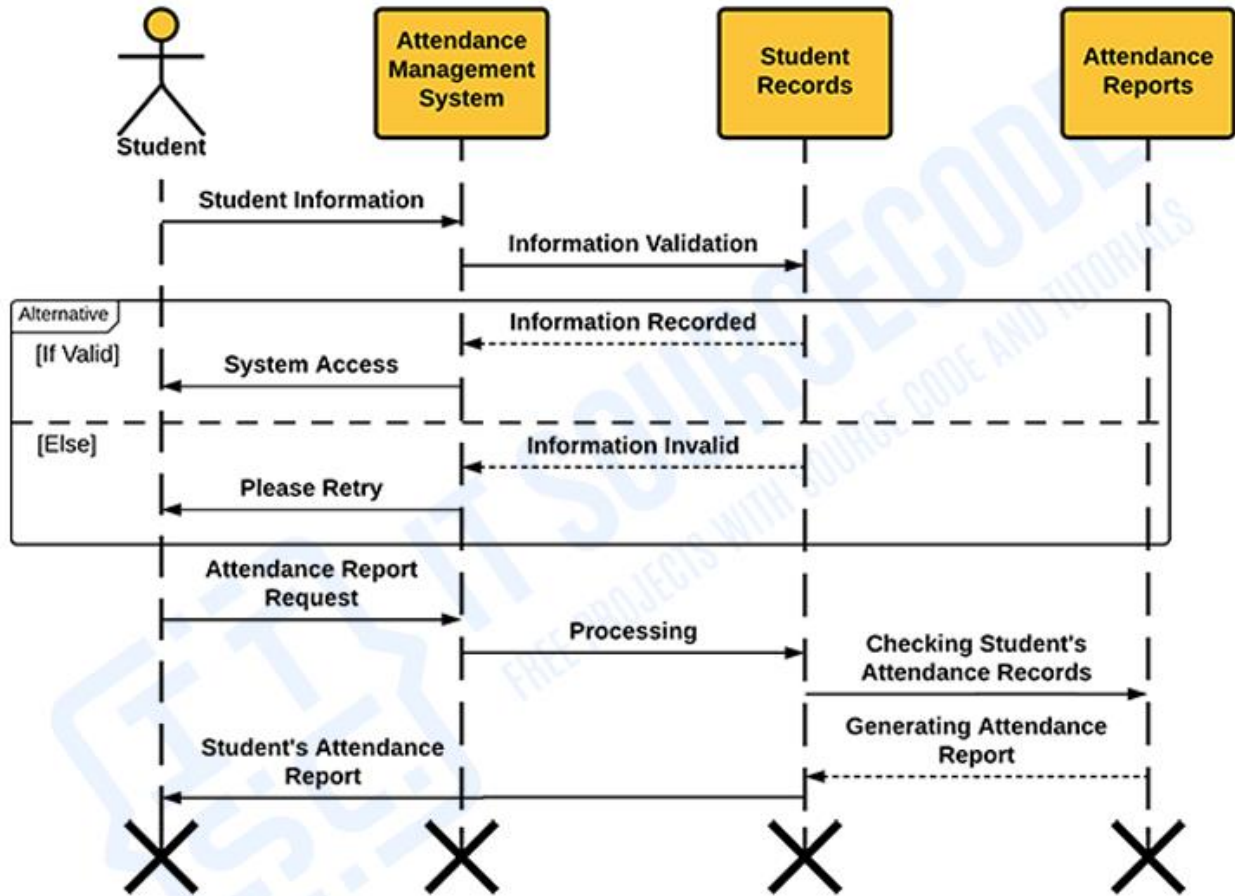
## Attendance Management System Sequence Diagram Description

The sequence diagram is used to look at the behavior of multiple objects within the attendance management system. Sequence diagrams are good for showing how objects work together and in what order the events occur. It shows objects that communicate within the attendance management system, with messages going from them to each other down the process in a certain order.

The attendance management system uses a sequence diagram to show how objects interact and how they happen sequentially. This sequence diagram shows how messages move from one object to another in a way that makes sense.

## Sequence Diagram for Attendance Management System (Illustration)

The designed sequence diagram for attendance management system gives you the exact scenario when the project is in use. This design presents the actual sequence of events and interactions between the user and the project. It uses symbols to represent the included objects and their roles in the attendance management system sequence diagram.



*UML Sequence Diagram for Attendance Management System*

The illustration is based on the main process of the attendance management system. It can still be modified and added with your desired functions and scenario. It is more effective and efficient to manage and monitor the attendance of employees through the attendance management system.

## **Attendance Management System Sequence Diagram (Explanation)**

The explanation for attendance management system discusses how the illustration works. It has the figures which will clarify the sequence of activities and their alternatives. The box figures represent the object, the stick man is for the user, and the broken lines are for the lifelines. Messages are then presented by vertical arrows.

The sequence diagram is designed to portray a timeline that starts at the top and gradually lowers to show the sequence of interactions. Each item has a column, and arrows indicate the messages that are sent between them.

The attendance management system sequence diagram has several boxes (objects) which are the attendance management system, the employee records, the requirement management, and the registration database. Its user could be the employer and employees (establishments) and students (schools), and the messages have a flow showing the alternative in every decision.