

# Employee Management System Deployment Diagram

## Employee Management System Deployment Diagram Description

An [employee management system](#) is a designed software to keep up with employees' information in an establishment. This software keeps track of their employees' information and the specifics of their payroll system allowing them to issue payroll information.

The software has the complete set of [employee management](#) tools that a company needs to keep track of employee information, engagement, and performance, as well as make more money for the whole company.

The [employee system](#) also directs and supervises the activities of employees in the appropriate direction. Keeps and manages information that is important to your employees in a safe way, like personal and work-related information.

## UML Deployment Diagram for Employee Management System

A deployment diagram for employee system in UML is used to illustrate its' physical architecture. In UML, deployment diagrams can show you how the software and hardware of the learning system work together and where the processing takes place.

The employee management system uses a UML deployment diagram to show how should the developed software be deployed. It clarifies the communications between links(nodes) which helps the project to work according to the design given to it. Deployment diagrams depict the setup of run-time processing nodes and the components that reside on them.

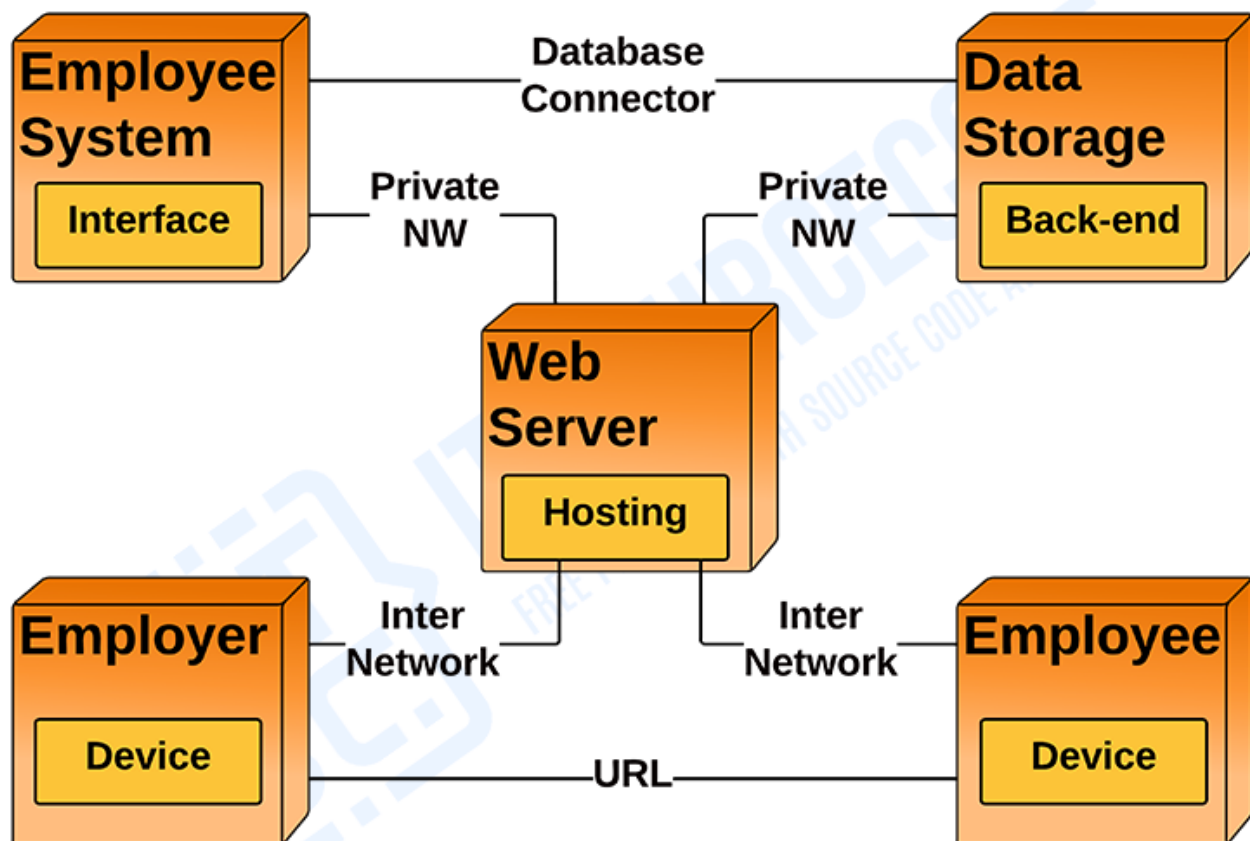
## Advantages of Employee System Deployment Diagram

- Portrays the deployment view of the employee management system.
- Helps in visualizing the topological view of the employee management system.
- Models the physical architecture of the employee management system.
- Shows the relationships between the software and hardware components in the employee management system.
- Shows the physical distribution of the system's processing.

## Deployment Diagram for Employee Management System

The designed deployment diagram for employee system shows the components (nodes) included to carry out the process. Nodes are represented by boxes that are labeled as software or hardware that specify the included components to carry out the employee management process. The boxes will then be connected and labeled to declare the type of connection they have with the other components.

### EMPLOYEE MANAGEMENT SYSTEM



### DEPLOYMENT DIAGRAM

*Deployment Diagram of Employee Management System in UML*

This deployment diagram design helps in the system development. This leads to scenarios where companies gain insights into their employees using an employee management system

allowing them to better plan and manage work hours, lowering labor expenses and increasing productivity. This strategy will assist employees in doing their best work each day in order to meet the organization's wider goals.

## **Employee Management System UML Deployment Diagram (Explanation)**

The **Employee Management System UML deployment diagram** explains the sketch of the relationship between software and hardware. These hardware and software are labeled to clarify their part in the system's operation. They were represented by nodes and the connections were represented by labeled arrows.

The deployment diagram shows the scenario when the system is deployed. It has 5 nodes represented with boxes and relationship connections. The nodes are the employee management system, the browser, the employer's device, the employee's device, and the database (system server). The system server node contains a developed database that will hold the details of the system online.

For the connection, the system is connected to the server database using a private network which enables it to pass a connection to the devices and enable users to access the system and database. The employer and the employees then can communicate through the system.