

# UNIVERSITY MANAGEMENT SYSTEM PROJECT REPORT PDF

## University Management System Project Description

University Management System is a clever, versatile, and cost-effective solution for universities, colleges, and schools. It's a whole end-to-end system that takes care of every detail of a university workflow, which is exactly what we needed.

The University Management System (UMS) is a cloud-based university management system that addresses all elements of colleges, universities, and schools. It offers an easy-to-use interface for managing university workflow and integrating all university procedures.

## University Management System Project Abstract

**Abstract:** University management system project is a web-based solution for colleges, universities, and schools. It was created for the university and its affiliated institutions to conduct, monitor, and analyze complicated activities such as student admission, examinations, and much more. It is a program that manages the complete student life cycle up to degree completion.

IUMS helps make important tasks like admission, results processing, registration, and fee management more efficient, so they can be done faster. All users, including students, college and university personnel, paper valuers, setters, and moderators, are given a role-based login/password to complete their tasks. Each student has access to an online tool through the university's examination management system to complete the following Student Lifecycle tasks. This is available to all students.

## University Management System Project Modules:

**University Information Management:** This module will help the university admin in handling the records and services offered by the school. It will secure and generate reports for transaction purposes.

**Courses and Subject Management:** As the main goal of every school is to provide a quality education, this module would ease the activity of handling courses and subjects. The system will help the admin assign the subjects per course and then bracket its schedules.

**Student Information Management:** The student information management cost a lot of time and effort to do. While this module will do the management, the admin would just feed the information to the system.

**Faculty and Student Attendance Monitoring:** This module might require a device to monitor the attendance of each of their students and faculty. This will help them handle the performance of their student as well as their faculty members.

**Grading System Management:** The work of this modules is to help the admin convey learning progress and performance of their students in a clear, accurate, consistent, and fair manner.

**Payment and Financial Monitoring:** This module will give them hold of all the payment transaction of their students or their parents. It will also help the admin with securing their financial statements for the university needs and purposes.

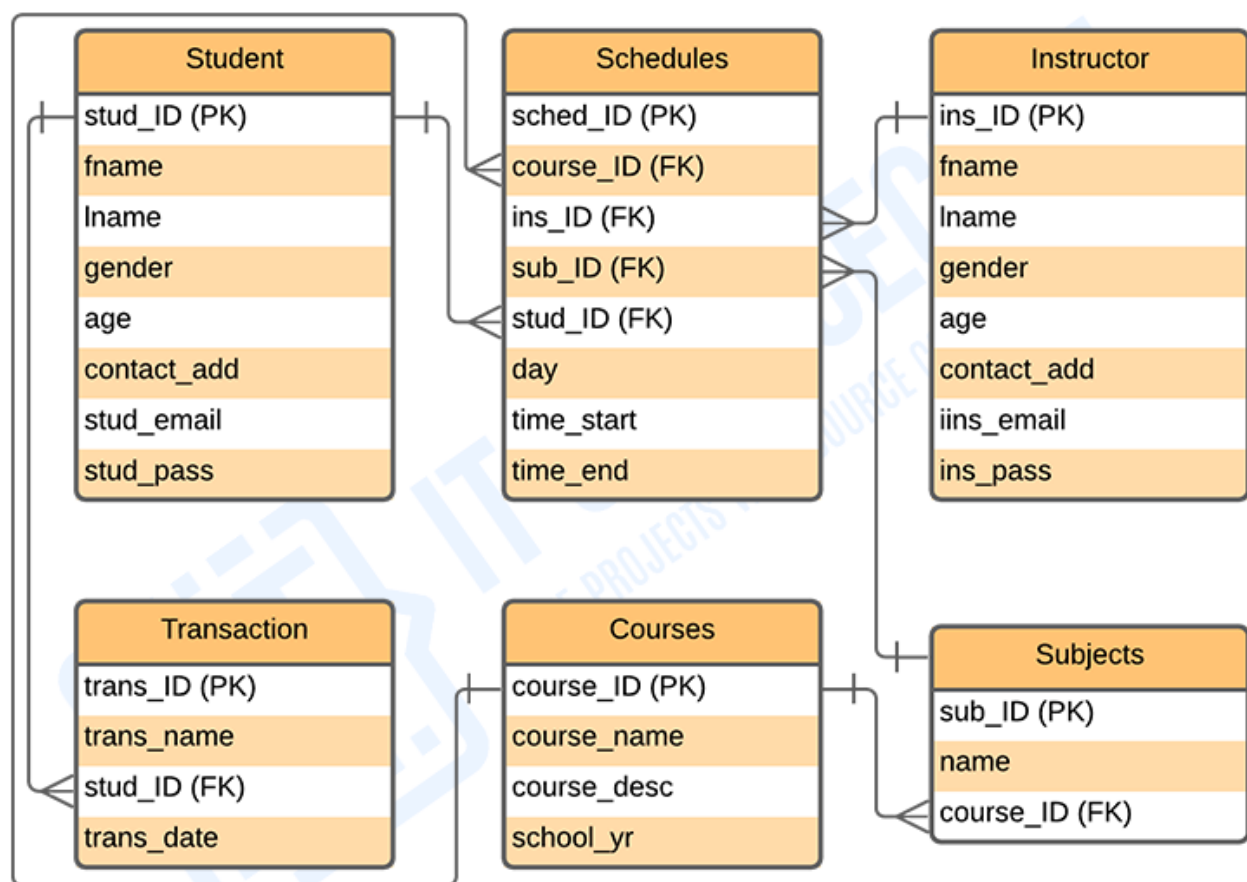
**Supply Management:** Supply Management module helps the school admin with the management of every supply inside the university.

## Diagrams of University Management System Project Documentation

Here are the essential UML Diagrams of the University Management System Project. Each of these UML diagrams has a role and function in developing the university management system.

**University Management System Project Database** - This [university management system project database](#) design was made based on managing university requirements. The system can encode students' information. University admin can have access to the students' status and information for important transactions. They can handle the data needed in managing student and instructors/teachers' files as well as the transactions made by their enrollees.

# UNIVERSITY MANAGEMENT SYSTEM



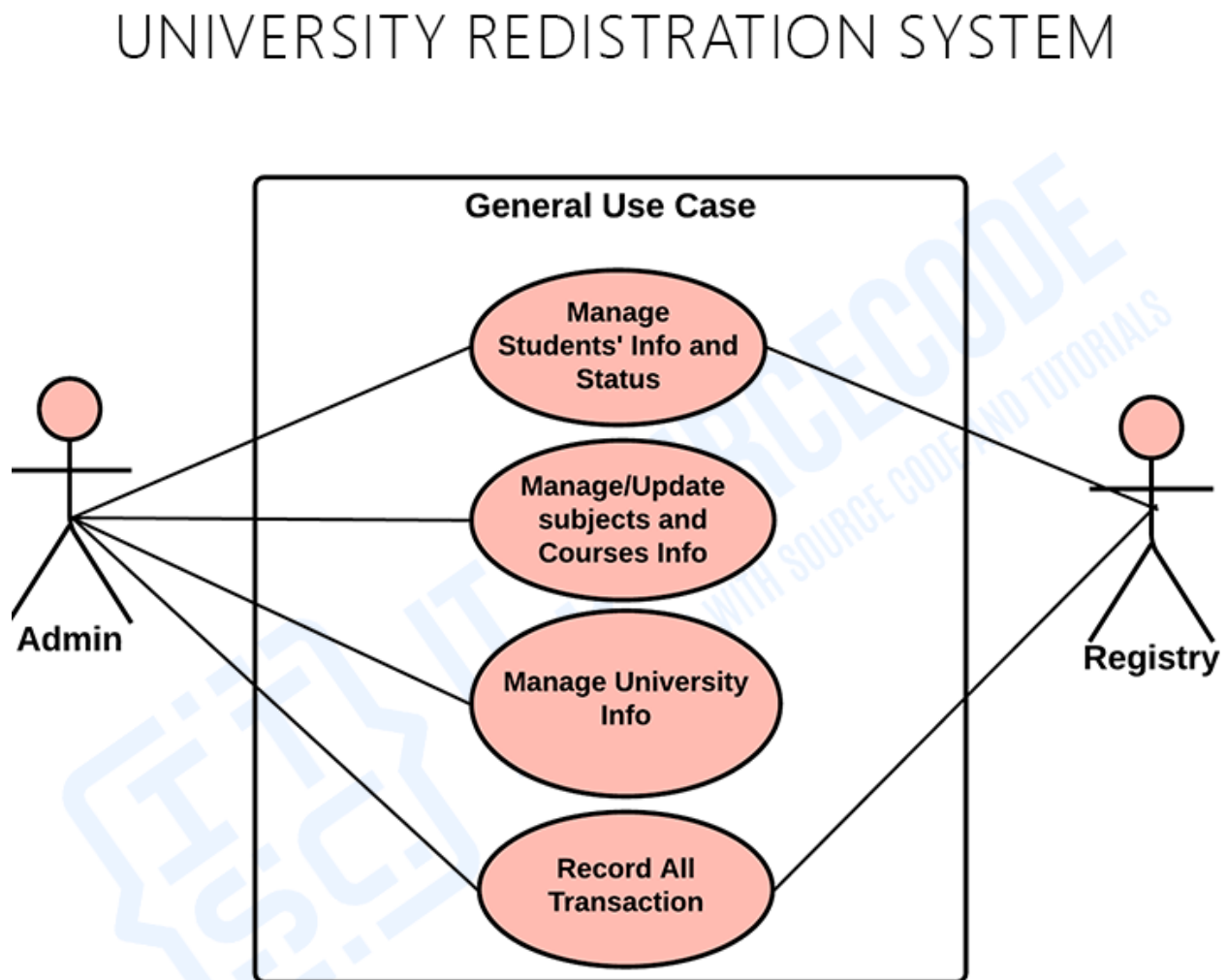
## ENTITY RELATIONSHIP DIAGRAM

### *University Management System Project Database*

The features included in the system ER diagram were the security and monitoring of the student's records, transactions, and status. These features were also listed and recorded in reports that served as the history of transactions done in the system.

**University Management System Use Case Diagram** - A university management system use case diagram is a visual representation of how the user interacts with the system. It depicts the system's numerous use cases and different sorts of users. The circles or ellipses are used to depict the use cases. The use case diagram for the university management system comes with several diagrams that describe the function of various use cases from the general use case. It uses the labels <<include>> and <<extend>> to know the structure and behavior of the system at the same time.

**University Management System General Use Case** - This diagram shows the general processes or functions that the system could do that is based on the activities done by the registrar admin and student registries in the system.

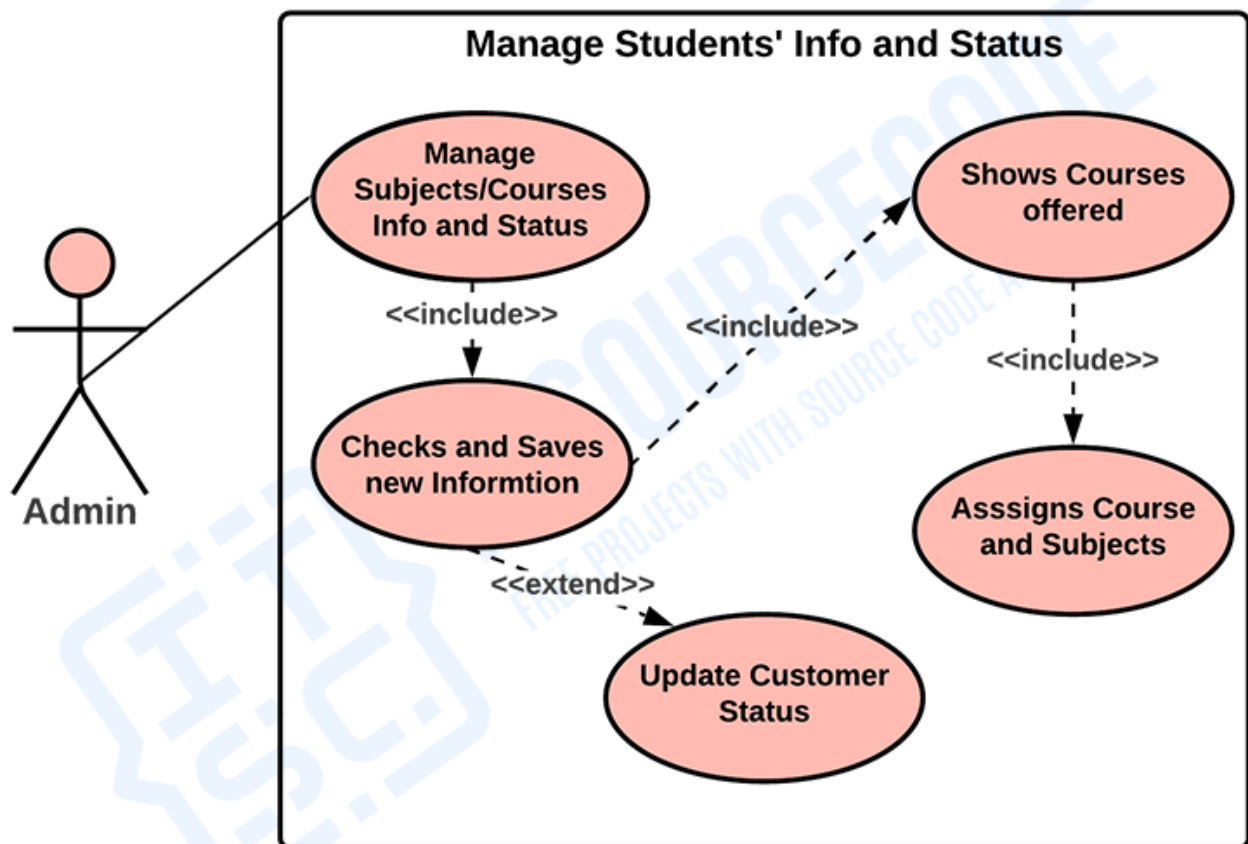


## USE CASE DIAGRAM

*University Management System General Use Case*

**Monitor and Manage Students' Information and Status** - This is where the admin or the main user of the system could control the registries' information that could be their basis for the registration transactions.

## UNIVERSITY REDISTRATION SYSTEM

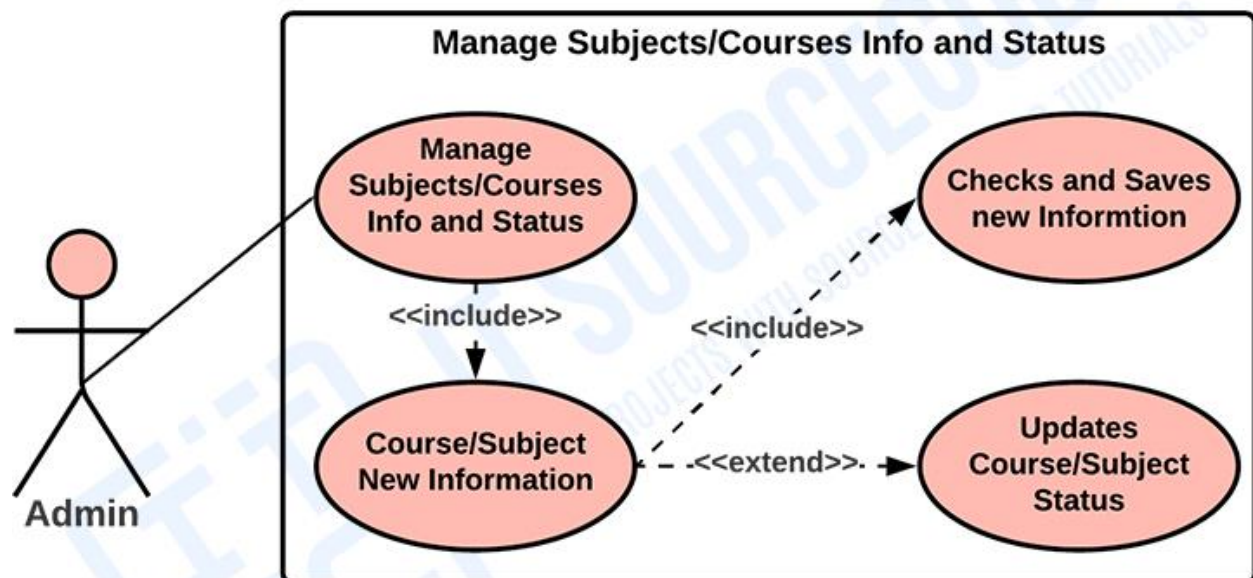


## USE CASE DIAGRAM

*Monitor and Manage Students' Information and Status Use Case Diagram*

**Manage Courses/Subjects' Info and Status** - This is the process (use case) where the registrar admin will have to disseminate the appropriate subjects for the courses offered that will be taken by the registries. This process starts with the encoding of a course that the university wants to offer. Then after the encoding, the admin will then assign the subjects that were under that certain course and then save it to have the prepared basis for the registration.

## UNIVERSITY REDISTRATION SYSTEM

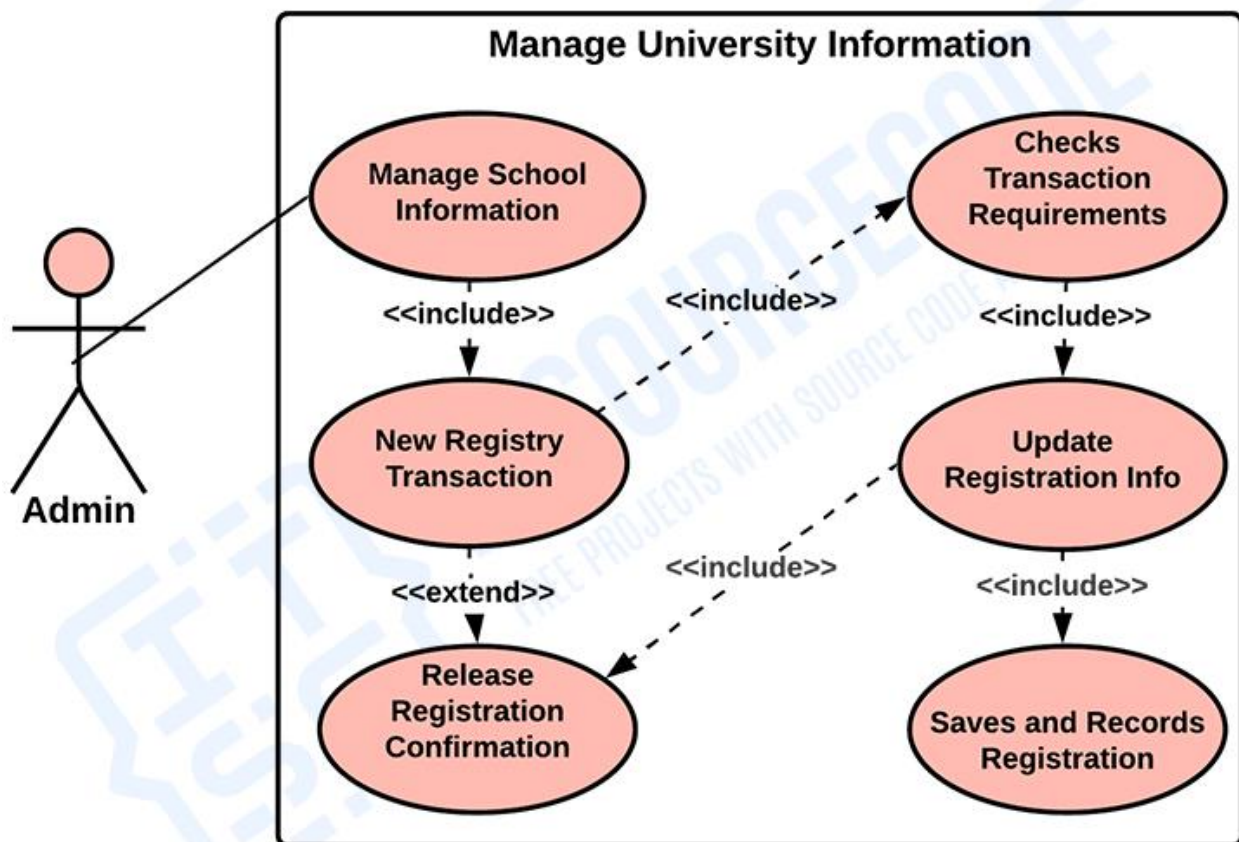


## USE CASE DIAGRAM

*Manage Courses/Subjects' Info and Status Use Case Diagram*

**Manage University Information** - This process explains how the admin or users handles the enrollment transaction in accord with the university information. The essence of this process is that it records the transaction made between the registries and the admin.

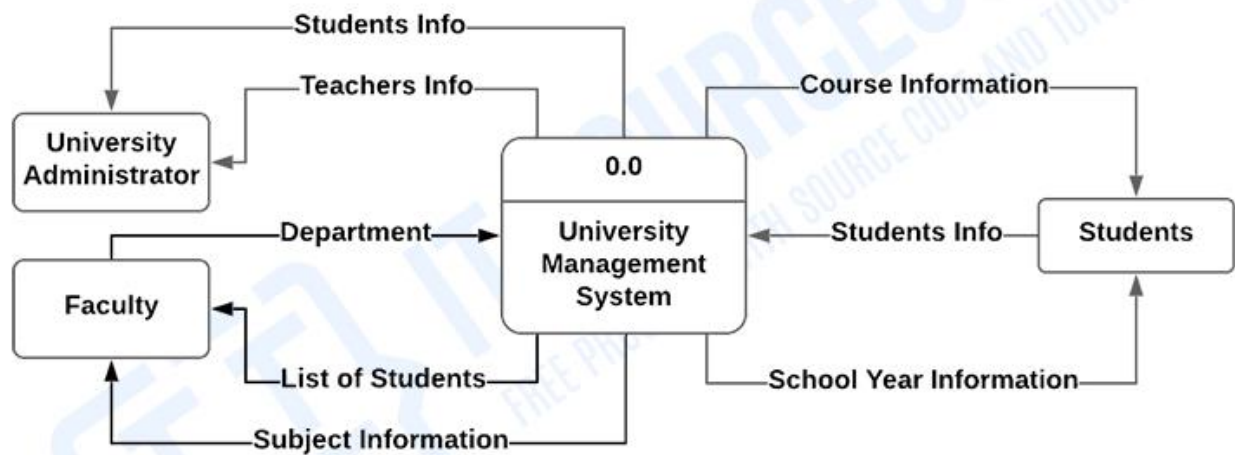
## UNIVERSITY REDISTRATION SYSTEM



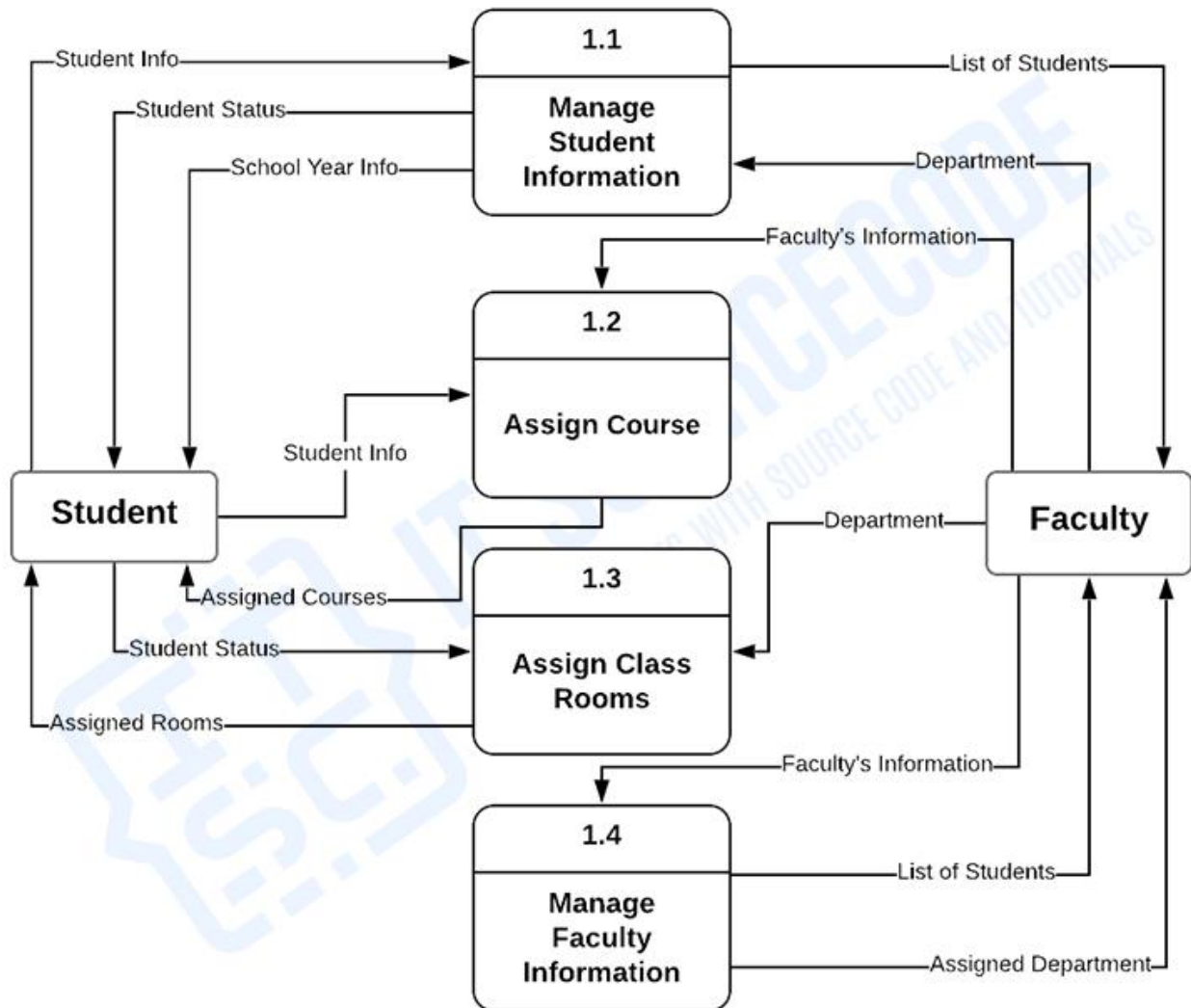
## USE CASE DIAGRAM

*Manage University Information Use Case Diagram*

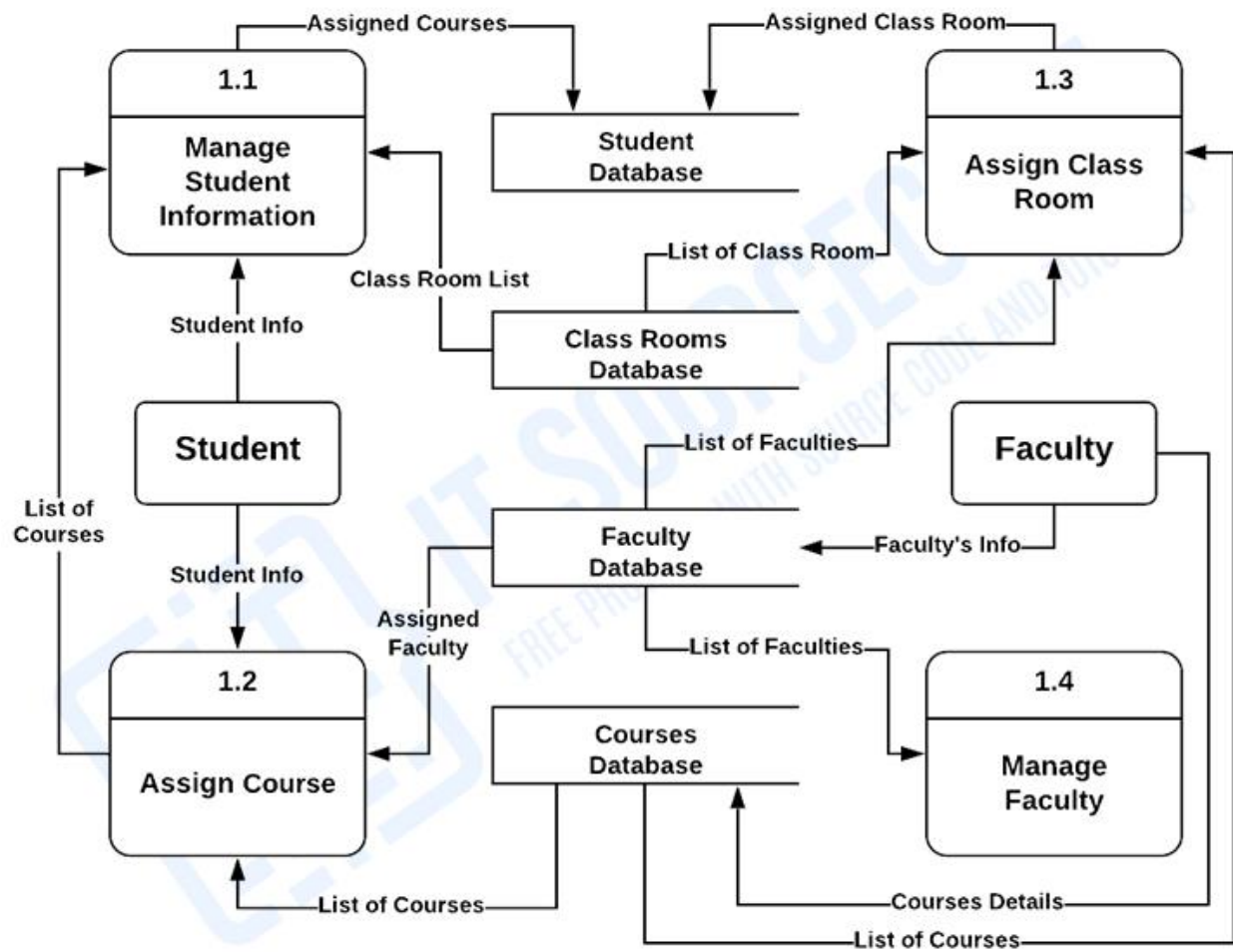
**University Management System Data Flow Diagram** - represents the flow of data and their transformations within the university management system. The input, processing, and output are used to represent and define the overall university management system. The data flow diagram comes with three levels which will elaborate the system's concept from a single node up to specific.



*University Management System DFD Level 0 (Context Diagram)*



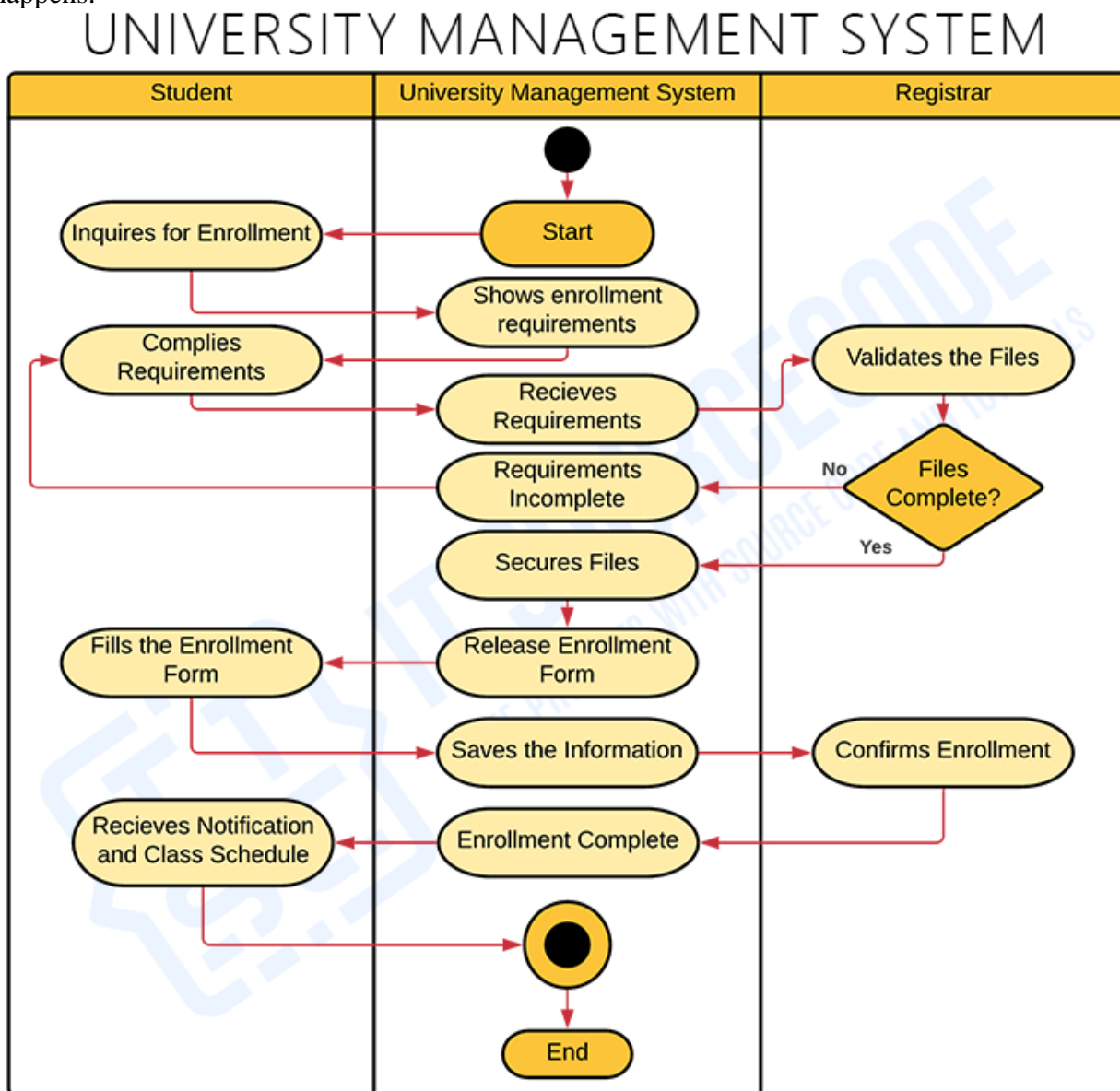
*University Management System DFD Level 1*



*University Management System DFD Level 2*

**University Management System Activity Diagram** - shows how would the system interact with the Students and the University Faculties. The interactions given here are based on the activities that usually happened in University Management.

**University Management System Activity Diagram (Student and Staff)** - This activity diagram is created to show you its core function and how does the activity in University Management happens.



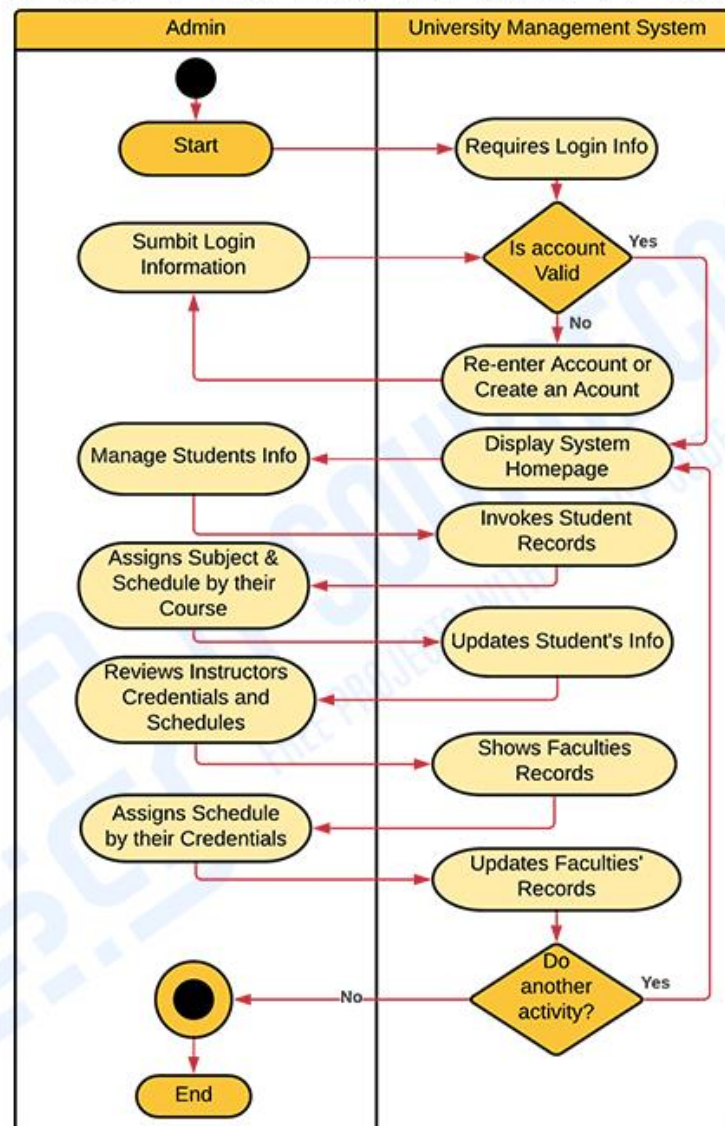
## ACTIVITY DIAGRAM

*University Management System Activity Diagram – (Student and Staff)*

## University Management System Activity Diagram (Admin Side)

The basis of this diagram comes from the concept of University Management. Universities were expected to have an admission of students and provide them their exact education information, then here's the illustration of its activities. It shows the University Management System Activity Diagram emphasizing the interaction of the users and the staff when doing enrollment.

# UNIVERSITY MANAGEMENT SYSTEM

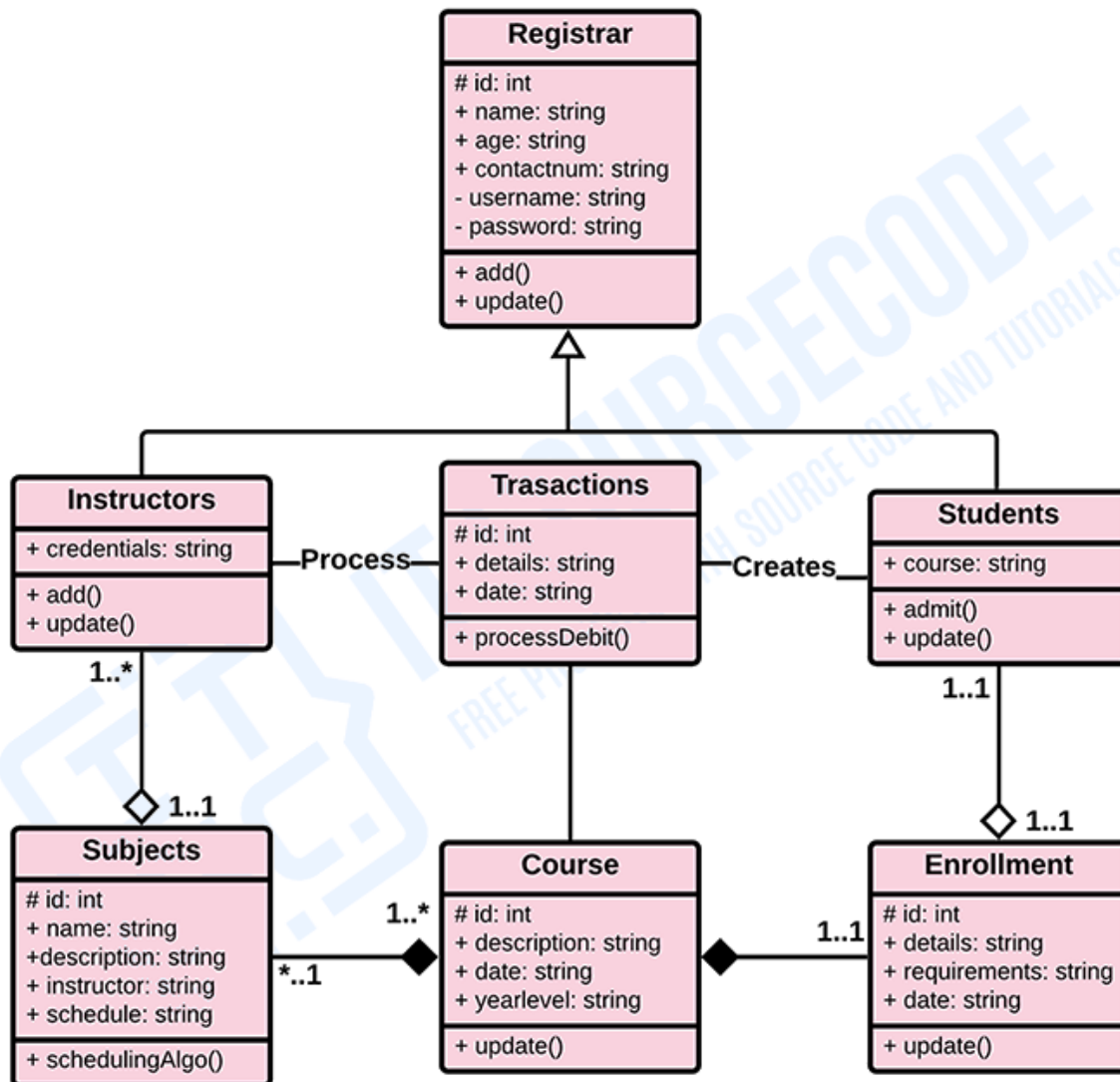


## ACTIVITY DIAGRAM

*University Management System Activity Diagram (Admin Side)*

**University Management System Class Diagram** - resembles a flowchart in which classes are represented as boxes with three rectangles inside each box. The top rectangle has the class's name; the middle rectangle contains the class's properties; and the bottom rectangle contains the class's methods, commonly known as operations.

## UNIVERSITY MANAGEMENT SYSTEM

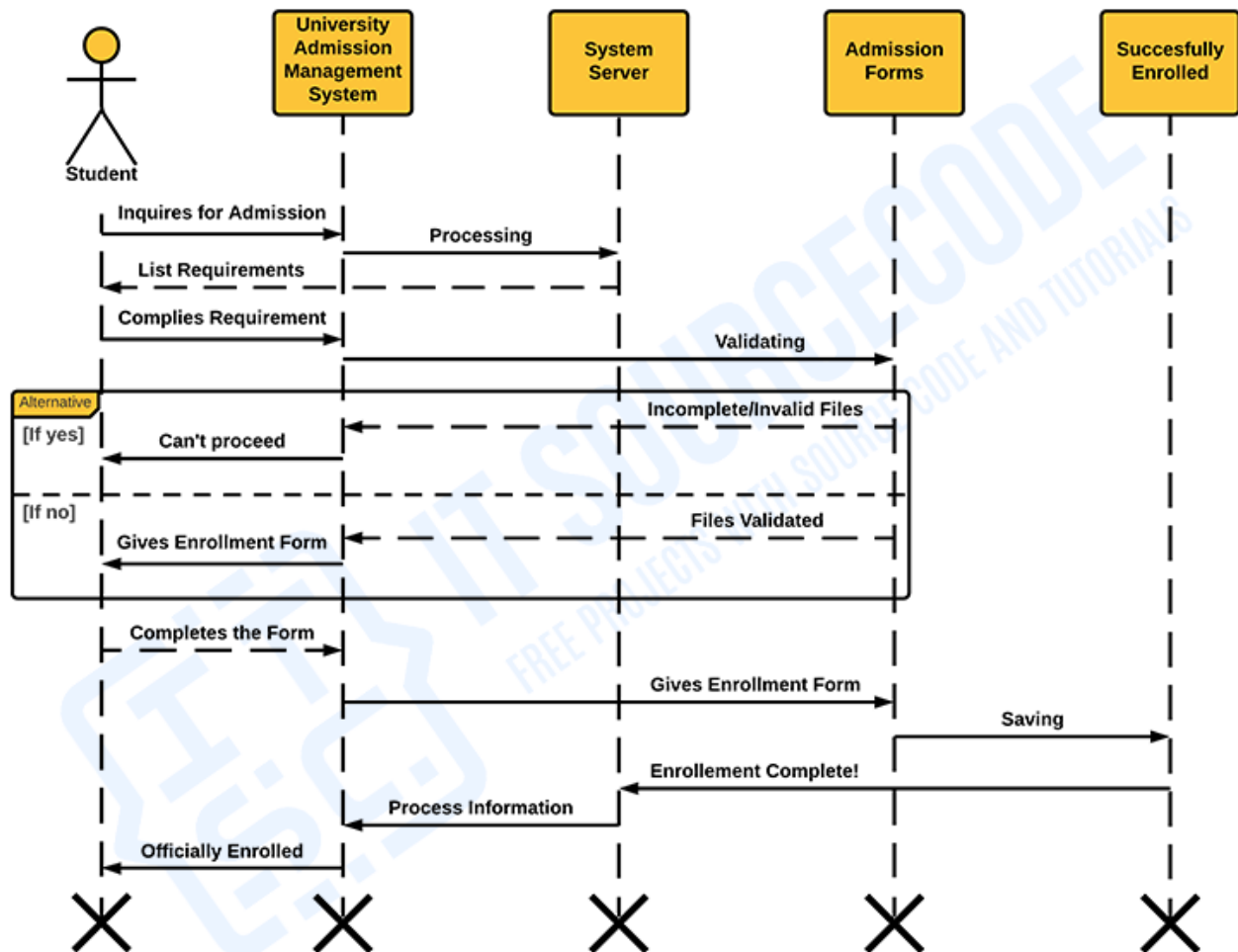


## CLASS DIAGRAM

*University Management System Class Diagram*

[University Admission Management System Sequence Diagram](#) - This designed sequence diagram is able to show programmers and readers the sequence of messages between the actor and the objects.

## UNIVERSITY MANAGEMENT SYSTEM



## SEQUENCE DIAGRAM

*University Admission Management System Sequence Diagram*