

EMPLOYEE MANAGEMENT SYSTEM PROJECT REPORT & DOCUMENTATION [PDF]

Employee Management System Project Report - Abstract

Abstract

Employee Management System Project is an essentially software designed to keep track of employee information in any company. It stores data such as their employees' personal information. The goal of "Employee Management System" is to create a work center scheduling system. Scheduling is a technology that makes the process of informing activities and notifications in the company where it is implemented simple and even online.

The employee management system project gives managers a better idea of their employees and helps them plan and manage their work hours in order to cut costs and boost productivity. It gives appropriate directions and supervisions for employees. It also secures and manages information that are important to the employees including personal and work-related information.

Employee Management System Project Report: Modules

Here are the modules present in Employee Management System Project Report (PDF).

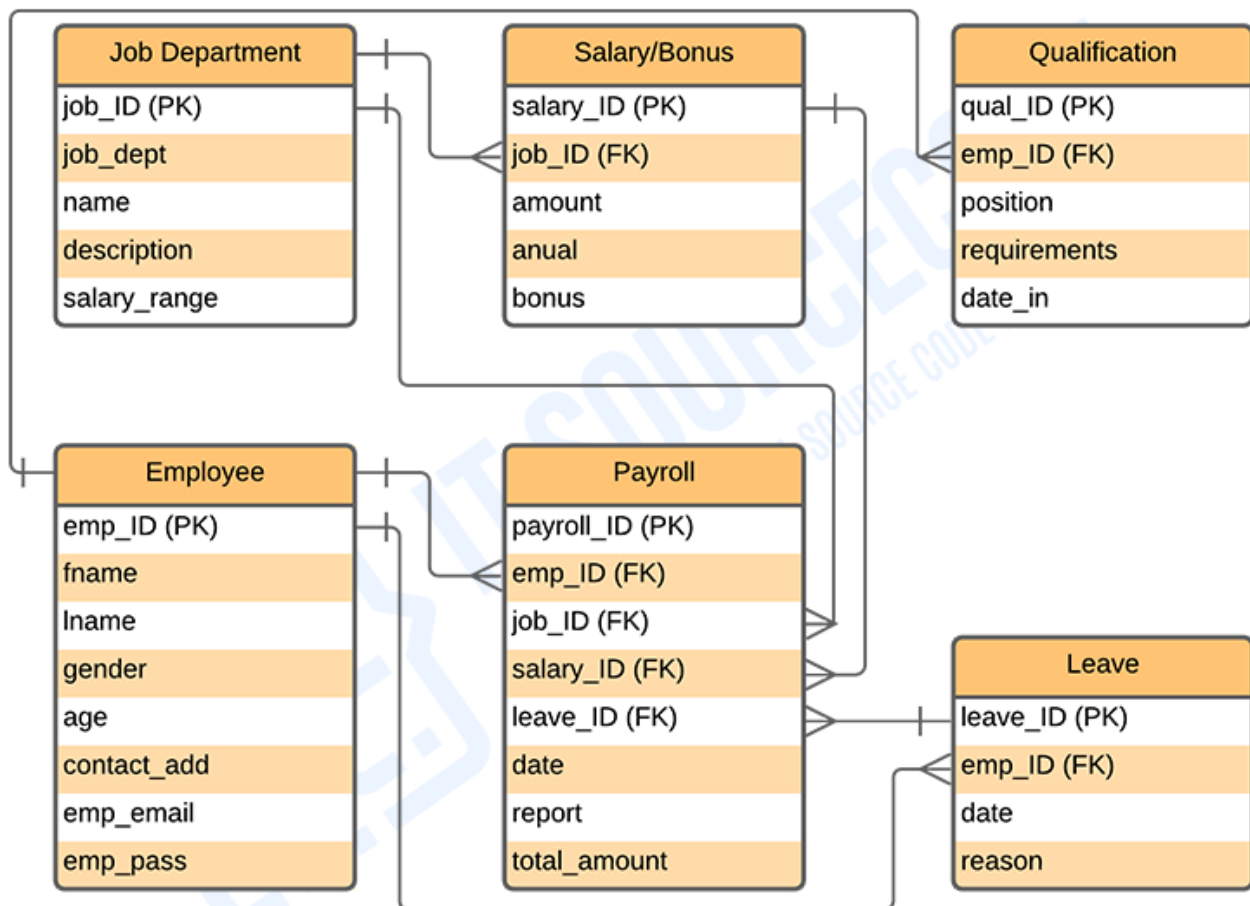
- **Employee Information Management:** This module provides a consolidated database for application tracking, employee demographics, compensation and benefit options, time tracking, and more. It's also the central location for all of your personnel data, including the most up-to-date statistics on your organization's hiring and retention patterns.
- **Employee Schedule Monitoring:** Employee schedule monitoring entails the use of a variety of workplace surveillance techniques to obtain information on employees' activities and whereabouts. Businesses keep tabs on employees in order to boost efficiency and safeguard company assets.
- **Monitor Working Days and Holidays:** This is the practice of employers watching over their employees' activities in the workplace and working days in order to ensure that they are productive. It will also help them to be aware when should their customer be active or take a break.
- **Set Leave Processing:** Employee leave request, approval, and monitoring will be aided by leave management in an organization's administrative processes and controls. With the help of this module, this task would be much lighter and manageable for the admin.
- **Generate Leave Reports:** It's useful for keeping track and securing the leave information of the employees. This can also can assist in problem solving and avoid conflicts. Generating these reports will assist the admin in updating details regarding important information.

UML Diagrams of Employee Management System Project Report & Documentation

Here are the UML Diagrams of employee management system project that should be visible in its report and documentation. These diagrams will help in developing the system. It provides guideline in the design and implementation of the project.

Employee Management System ER Diagram

The employee management system ER Diagram is the model used to emphasize the system's [database design](#). It gives deep understanding on employee management system database (back end) and its tables. This also guides in managing [Employee database](#) as well as the relationships of tables in it.

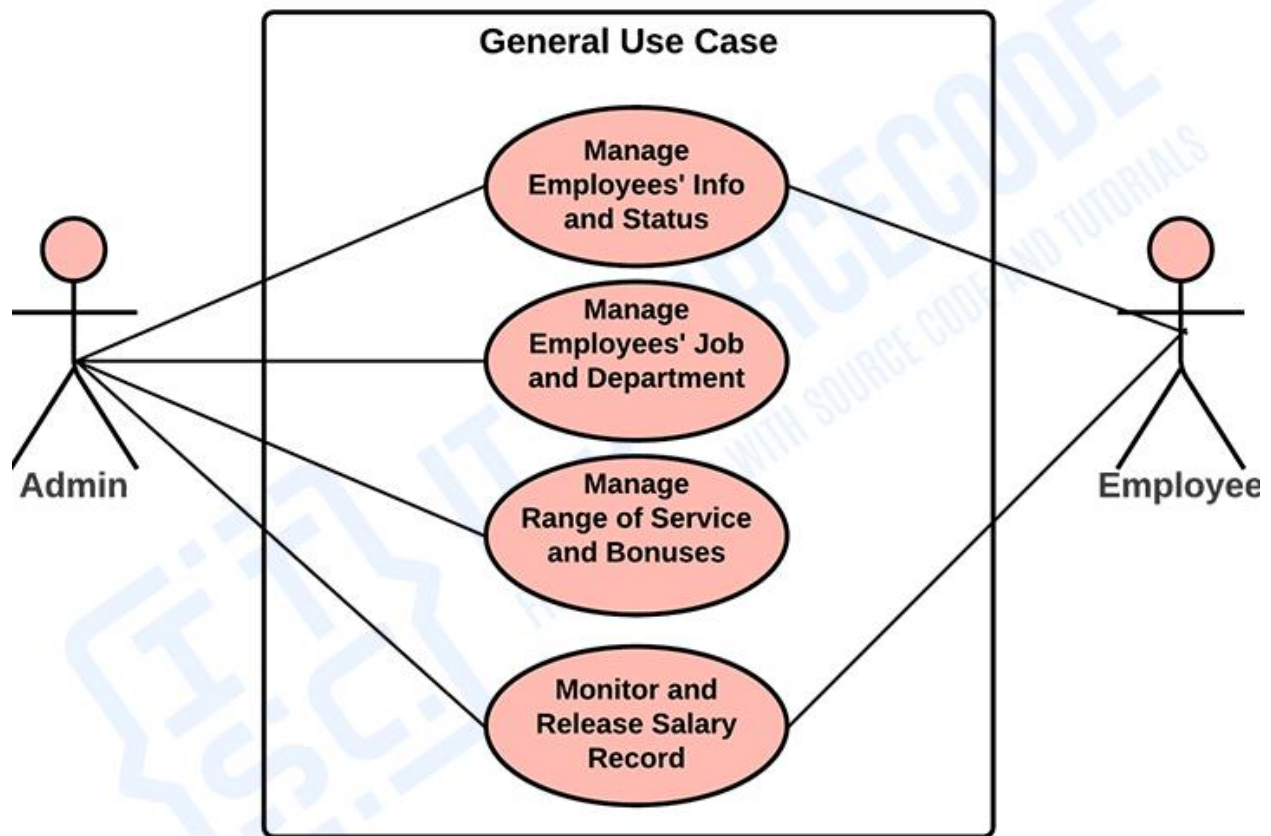


Employee Management System ER (Entity Relationship) Diagram

Employee Management System Use Case Diagram

The [employee management system use case diagram](#) is a visual representation of how a user might interact with the employee system. It depicts the system's numerous use cases and different sorts of users. This diagram also determines the possible features to identify the flow of employee system.

EMPLOYEE MANAGEMENT SYSTEM

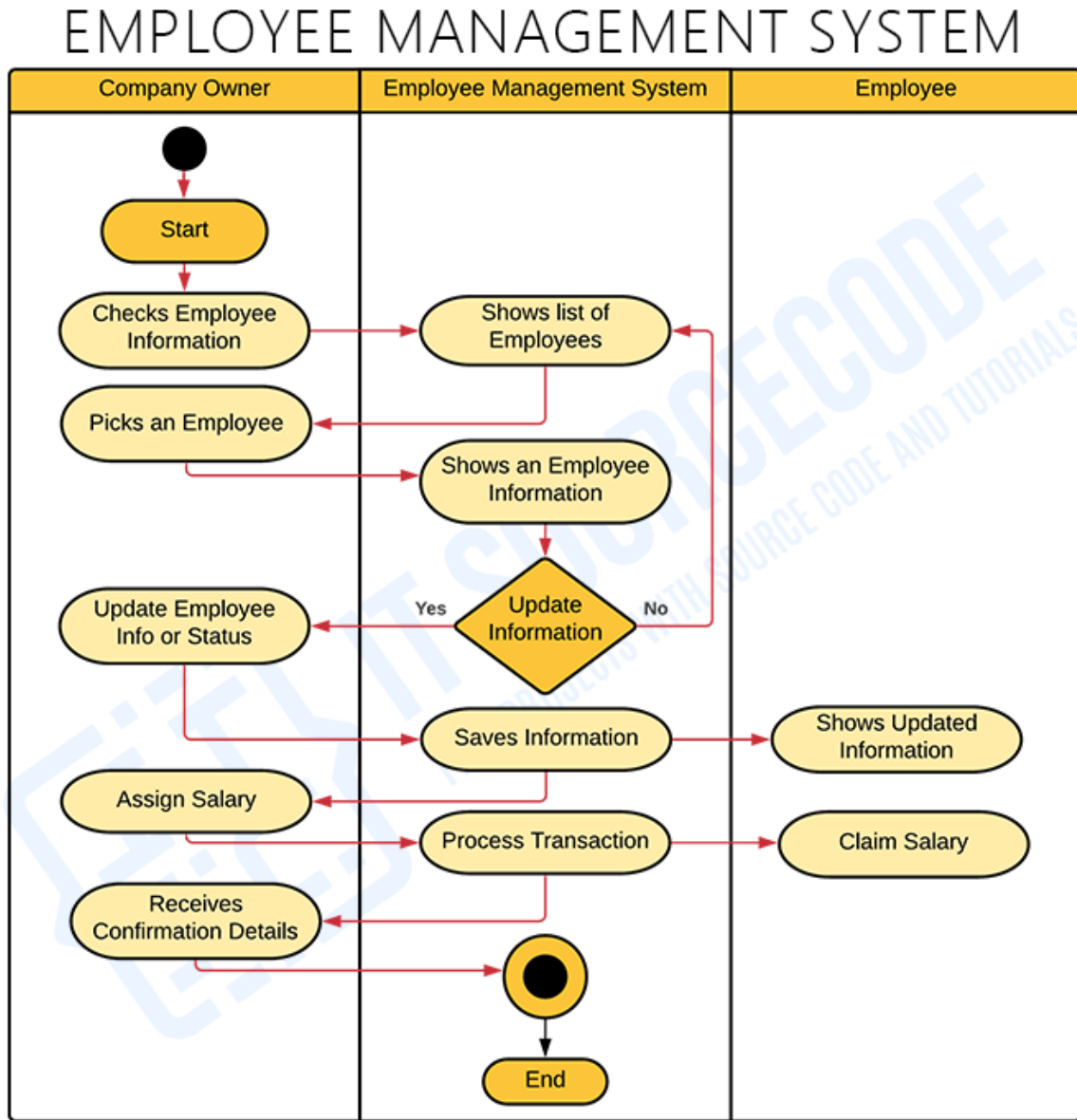


USE CASE DIAGRAM

Employee Management System Use Case Diagram

Employee Management System Activity Diagram

The [employee management system activity diagram](#) shows the system's behavior in terms of responding to its users. Employee Management System UML Activity Diagram also gives the programmers bright ideas and guides them throughout the system making.

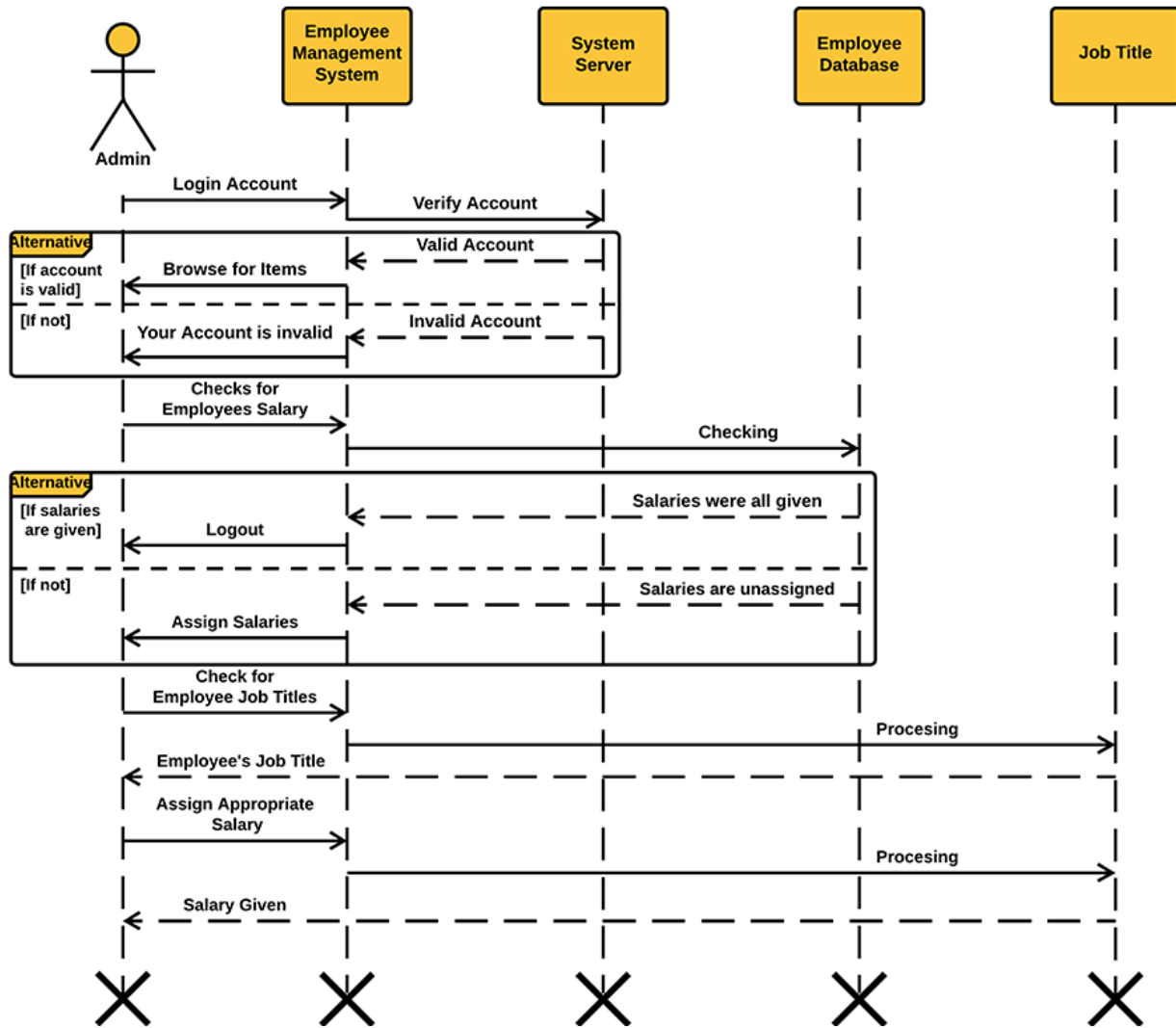


ACTIVITY DIAGRAM

Employee Management System Activity Diagram

Employee Management System Sequence Diagram

The [employee management system sequence diagram](#) contains the sequence of activities that happens when managing employees. This diagram also explains the structure and the behavior of the Employee Management System.



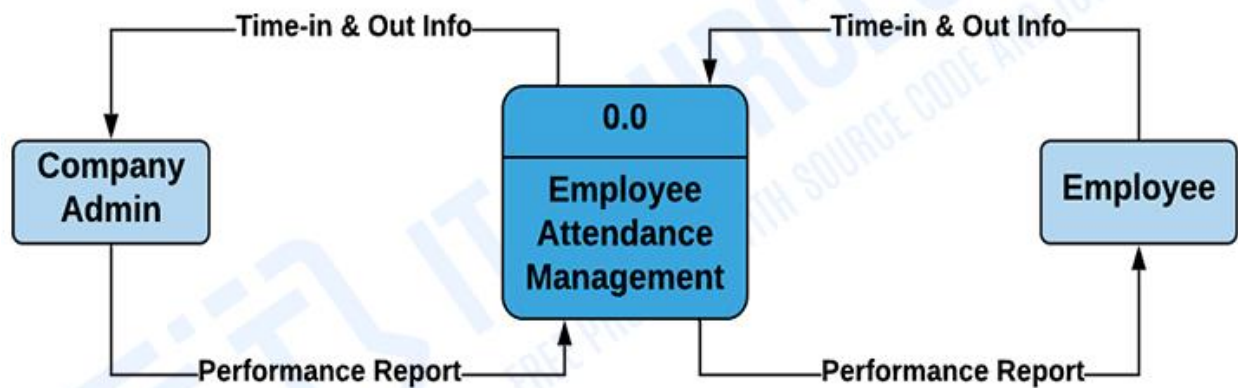
Employee Management System Sequence Diagram

Data Flow Diagram for Employee Management System

The [Data Flow Diagram \(DFD\) for employee management system](#) represents the flow of [data](#) and its [transformation](#) within employee system. It carries out one of the preparatory steps when developing the employee management system in form of DFD level 0, 1 and 2. Each of these levels elaborates the flow of data that enters and exits the project.

The **Level 0 DFD for Employee Management System** (known as **context diagram**) represents the abstract view of the project. It possesses the single process and external parties that depicts the overall structure as a whole.

EMPLOYEE MANAGEMENT SYSTEM

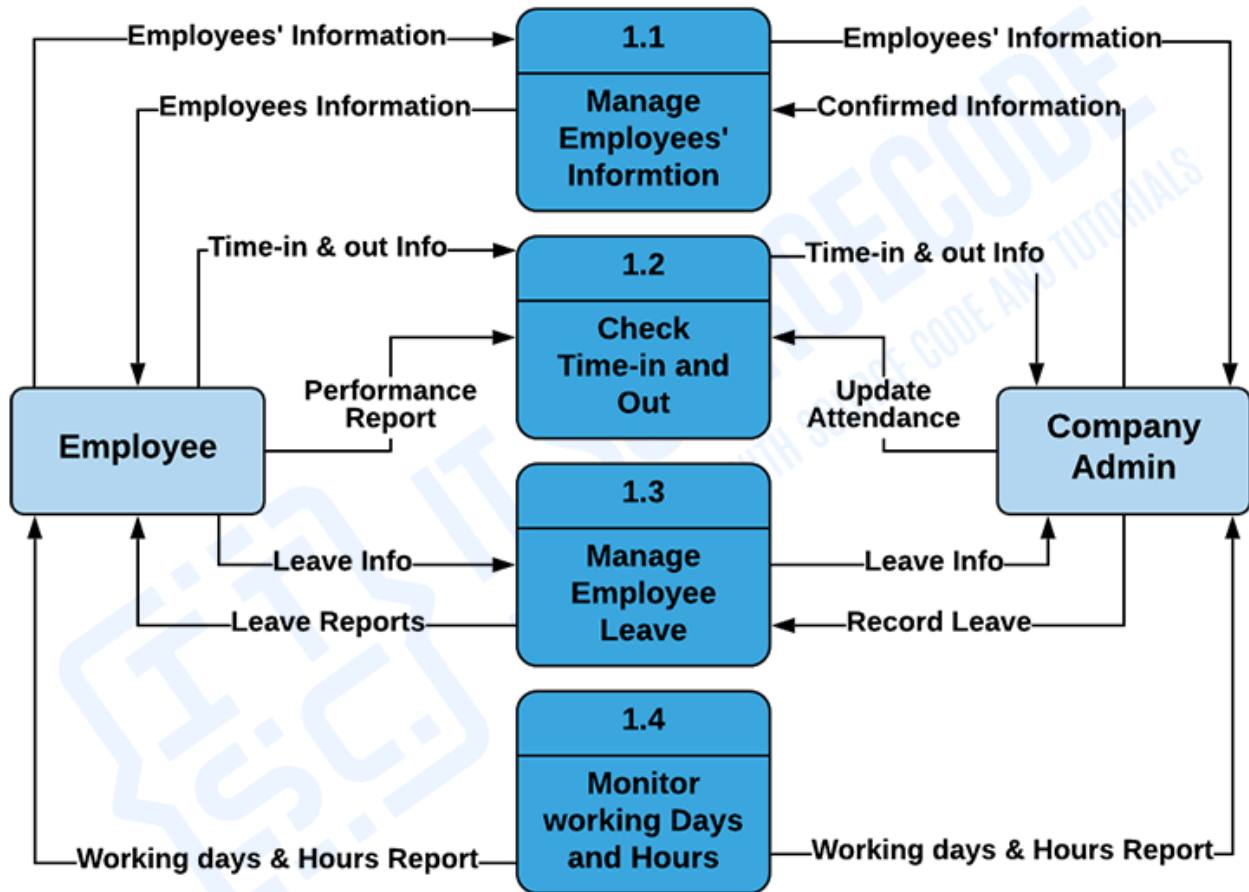


DATA FLOW DIAGRAM LEVEL 0

Employee Management System DFD Level 0 (Context Diagram)

The **Level 1 DFD for Employee Management System** provides a broader overview of the context diagram. It widens the processes from the context diagram and determines the sub processes that complete the employee management system.

EMPLOYEE MANAGEMENT SYSTEM

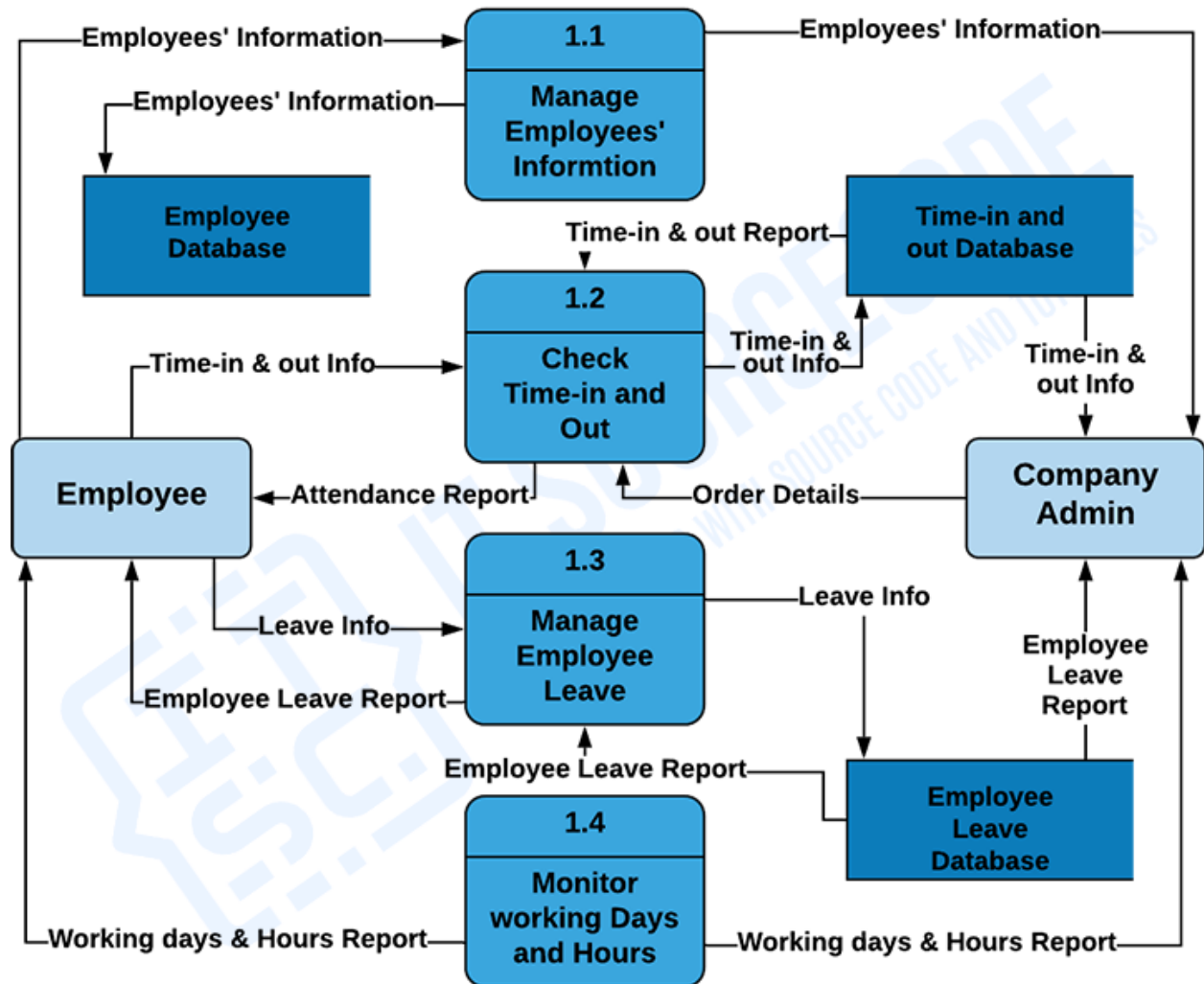


DATA FLOW DIAGRAM LEVEL 1

Employee Management System DFD Level 1

The **DFD level 2 for Employee Management System** tells the ideas on where does the data inputs goes and inputs comes within the project. It shows not only the detailed processes of system, but also gives you precise destination of the data that flows in it.

EMPLOYEE MANAGEMENT SYSTEM



DATA FLOW DIAGRAM LEVEL 2

Employee Management System DFD Level 2