

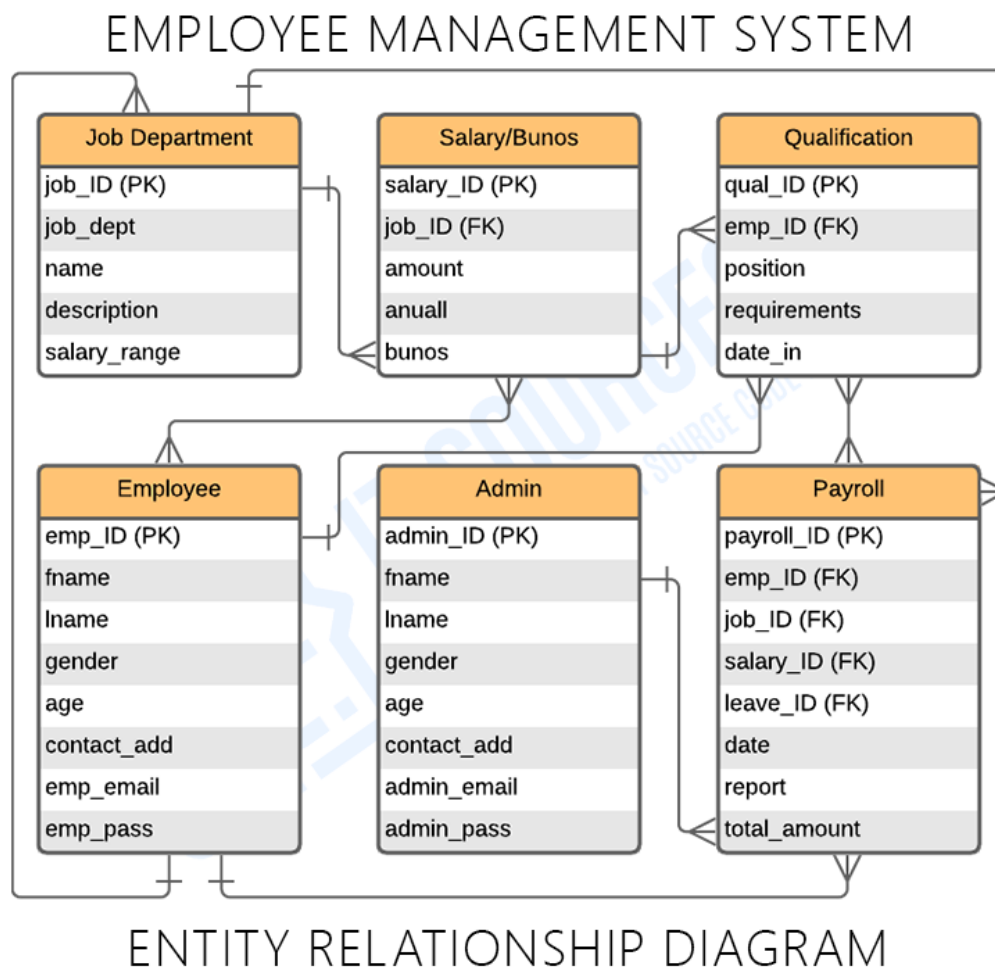
# Important Diagrams for Employee Leave Management System Project Report, Synopsis and PDF Documentation

Here are the essential Diagrams and Synopsis for Employee Leave Management System Project Report and PDF Documentation.

## 1. [Employee Leave Management System ER Diagram](#)

This simple database will give you deep understanding about Employee Leave management system database project with ER Diagrams tables. This will teach you in managing [Employee database](#) as well as the relationships of tables in [Employee management system](#) project database design.

The idea presented here can be used for your [Employee Leave management system final year project](#). You can enhance the ER diagram for a *system* in this article to meet your desired system requirements.

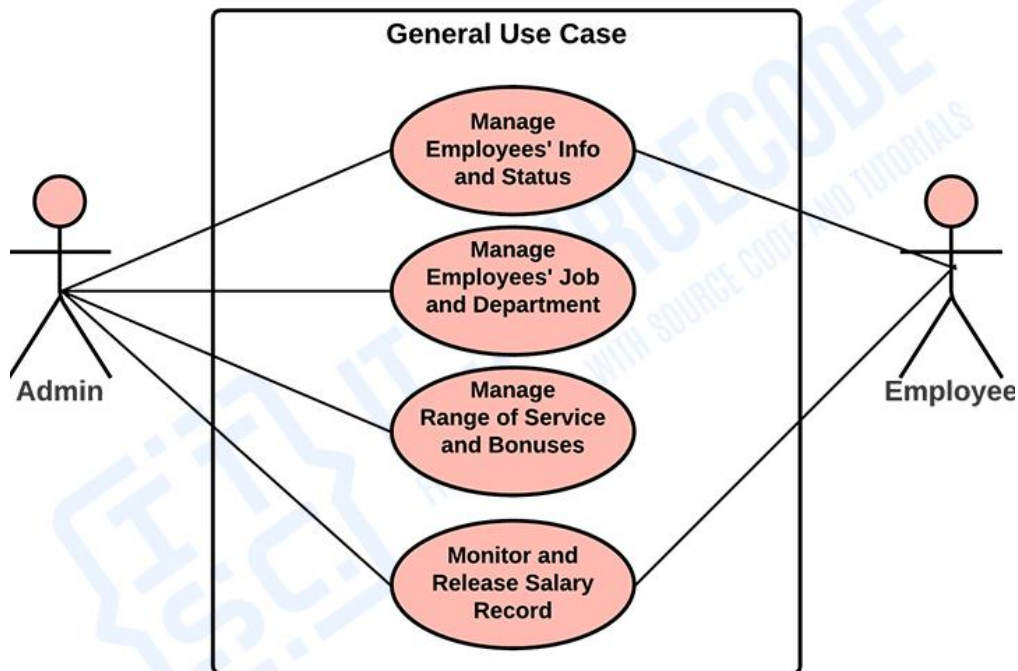


## 2. Employee Management System Use Case Diagram

A [use case diagram](#) is a visual representation of how a user might interact with a program. A use case diagram depicts the system's numerous use cases and different sorts of users. The circles or ellipses are used to depict the use cases.

By creating the use case of the Employee Management System, you must determine first the possible features to identify the flow of the system. After that you can now create the blueprint or core of the system function.

### EMPLOYEE MANAGEMENT SYSTEM



### USE CASE DIAGRAM