

Important Diagrams of Employee Attendance Management System Project Documentation (PDF)

Here are the Employee Attendance Management System Diagrams for you keep as your blueprint documentation in creating your Employee Attendance Management System Mini Project and you can download its PDF.

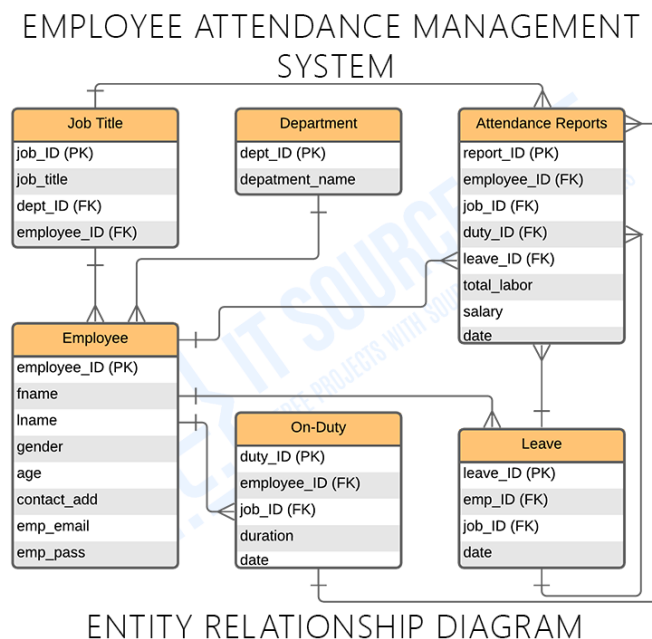
1. Employee Attendance Management System ER Diagram

is used to determine the data tables that should secure the data in the system. The ERD or Entity Relationship Diagram for Employee Attendance Management System will serve as a guide to the programmer in building the back end of the system. The employee attendance management system entities and their relationships were the basis on how would the system secures and used to achieve the expected goal.

This simple database design will give you deep understanding about how should the Employee Attendance Management system handle or store the given data using database and tables.

This Entity Relationship Diagram for the Employee Attendance Management System project with data table, also gives you more ideas on how to make a database design *with ERD, tables, and schema*.

The idea presented in this ERD can be used for your own Employee Attendance Management system final year project. You could also enhance the ER diagram for a *system* in this article to meet your desired system requirements.

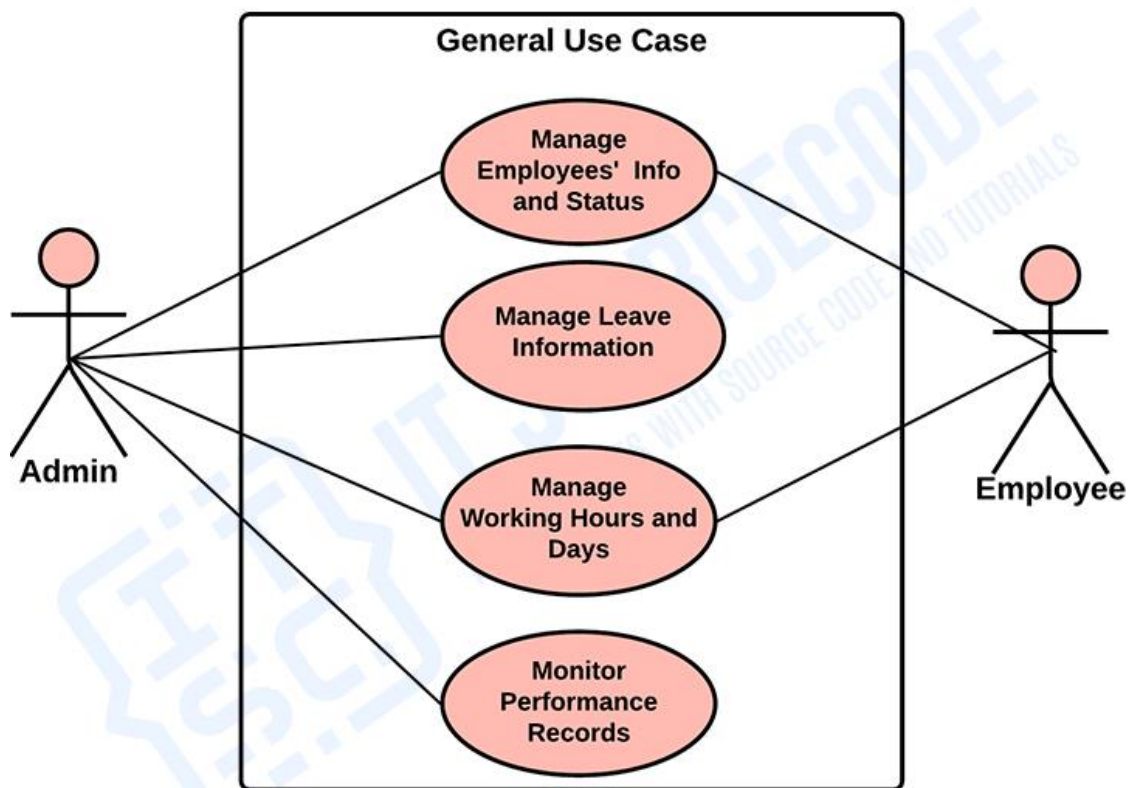


2. Employee Attendance [Management System Use Case Diagram \(UML\)](#)

Employee Attendance Management System Project Use Case Diagram – is an illustration for the management of Employees' Attendance with the use of a System. This is to convert the manual way of checking the employee's attendance and to secure and make sure that the attendance were accurate.

This discusses the function or work of the Employee Management System project UML as well as its use case diagram using include and extend. By the end of the discussion you will find the downloadable use case diagram PDF file for [Employee Management System](#) that can serve as your basis in building your project.

EMPLOYEE ATTENDANCE MANAGEMENT SYSTEM

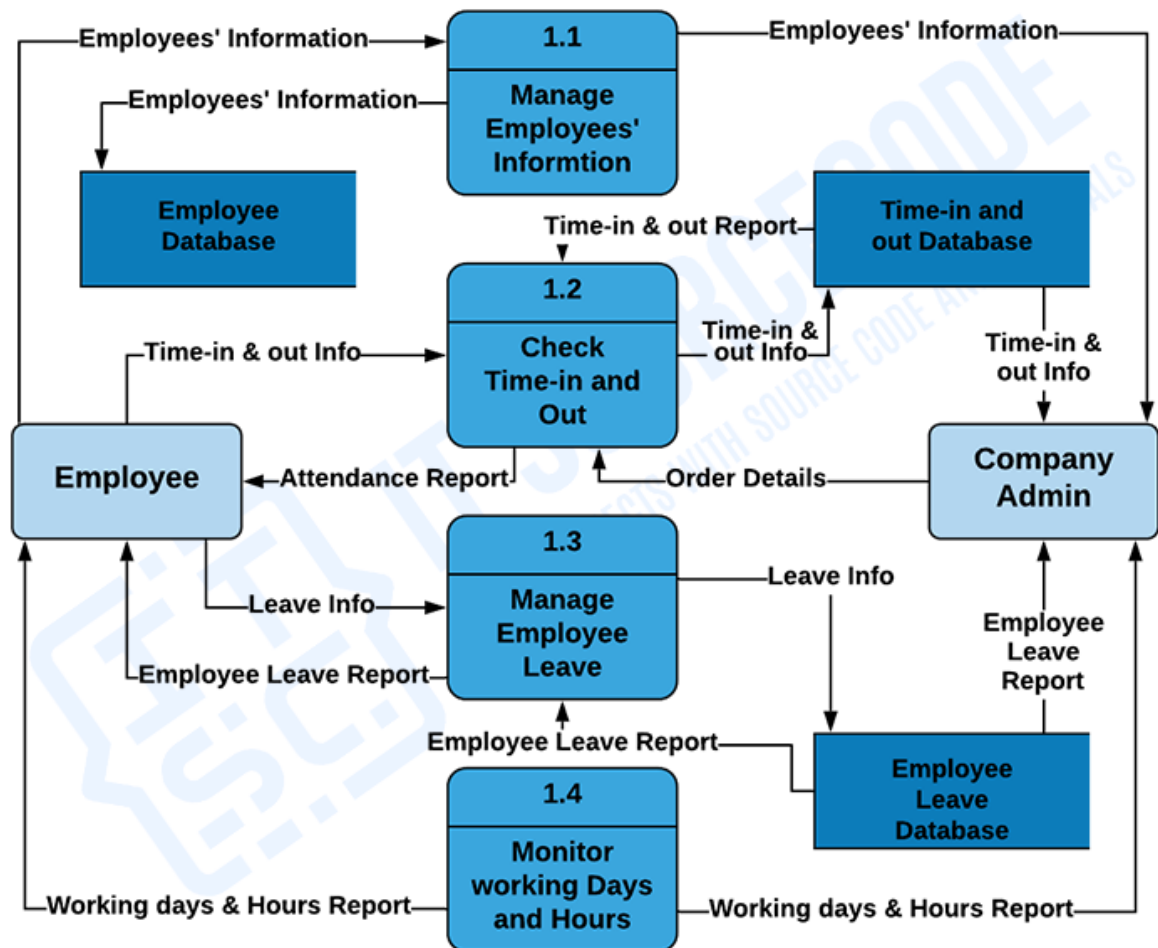


USE CASE DIAGRAM

3. Employee Attendance Management System (DFD) Dataflow Diagram

Employee Attendance Management System DFD – serves as a guide in creating a fully functional system. It will also help the programmers on what should be the flow of the data inside the Employee Attendance Management System through the help of diagram and symbols. This DFD for Employee attendance Management must have the Levels 0, 1 and 2.

EMPLOYEE ATTENDANCE MANAGEMENT SYSTEM



DATA FLOW DIAGRAM LEVEL 2